



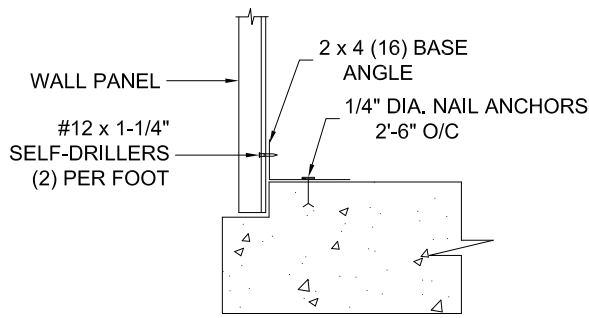
3861 OLD GETWELL RD. TM
MEMPHIS, TN. 38118
(901) 365-6900
www.spircomfg.com

Building Erection Manual

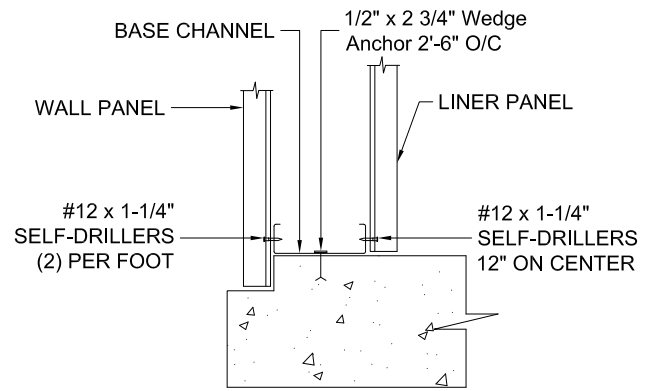
TABLE OF CONTENTS

1. BASE CONDITIONS
2. COLUMN RAFTER DETAILS
3. COLDFORM ENDWALL DETAILS
4. MILL ENDWALL DETAILS
5. TYPICAL END WALL CONNECTION DETAILS
6. RIGID ENDWALL DETAILS
7. FASTNER SPACINGS
8. FASTENER PATTERNS
9. ROOF PANEL INSTALLATION
10. WALL PANEL INSTALLATION WITH GUTTER
11. WALL PANEL INSTALLATION WITH HIGH SIDE RAKE TRIM
12. WALL PANEL INSTALLATION WITH EAVE TRIM
13. SKYLIGHT INSTALLATION
14. FRAMED OPENING DETAIL
15. WALK DOOR INSTALLATION
16. WINDOW INSTALLATION
17. RIDGE VENT INSTALLATION
18. LOUVER FAN INSTALLATION
19. CANOPY OVERHANG WITH GUTTER AND SOFFIT PANEL
20. CANOPY OVERHANG WITH GUTTER AND NO SOFFIT PANEL
21. CANOPY OVERHANG WITHOUT GUTTER AND WITH SOFFIT PANEL
22. CANOPY OVERHANG WITHOUT GUTTER AND WITHOUT SOFFIT PANEL
23. PORTAL FRAME DETAIL
24. STANDARD TRIM INSTALLATION
25. SAG ANGLE INSTALLATION
26. ENDWALL ROOF OVERHANG WITH COLDFORM ENDRAFTER
27. STRAPPING INSTALLATION
28. FACADE INSTALLATION DETAILS
29. INSULATION INSTALLATION DETAILS

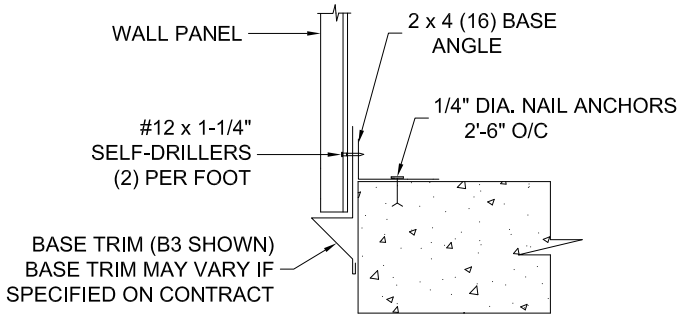
DESCRIPTION		
TABLE OF CONTENTS		
DRAWN BY #	ISSUE DATE	PAGE
DAW	1/8/2003	1 OF 1



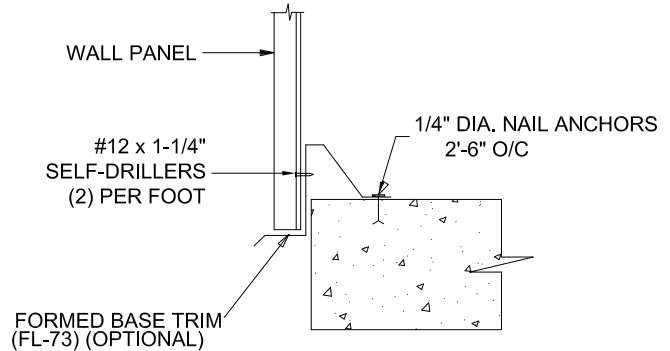
WALL PANEL TO BASE ANGLE



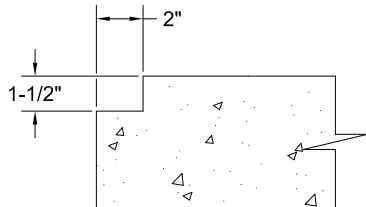
LINER PANEL TO BASE CHANNEL



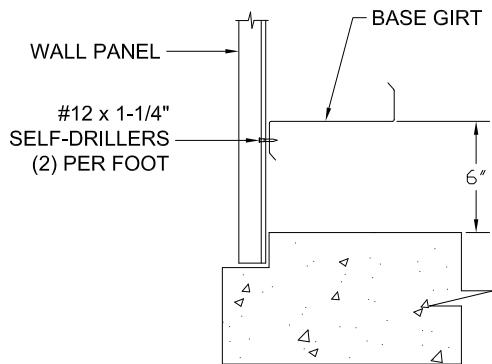
WALL PANEL TO BASE ANGLE
(NO SHEET RECESS)



WALL PANEL TO BASE TRIM
(NO SHEET RECESS)



STANDARD SHEET RECESS

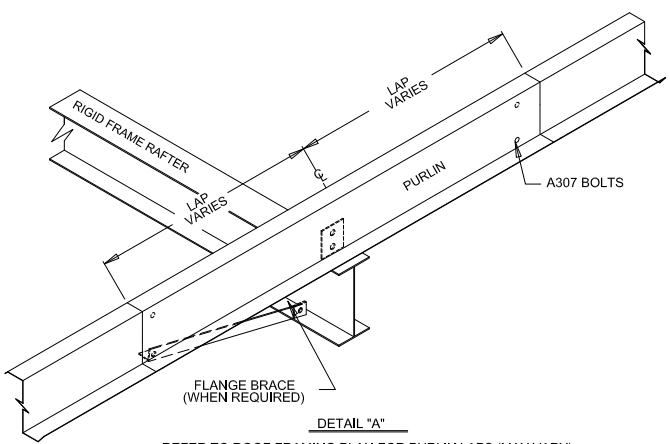


WALL PANEL TO BASE BASE GIRT

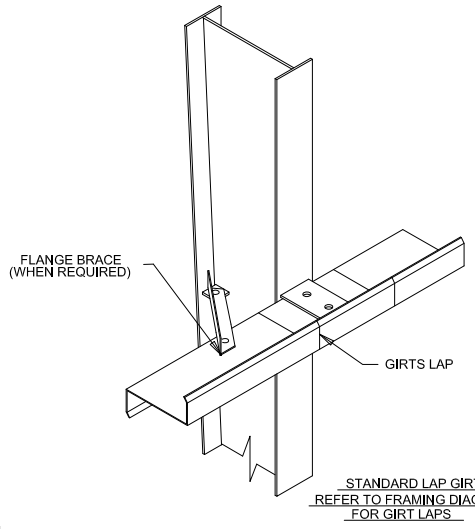
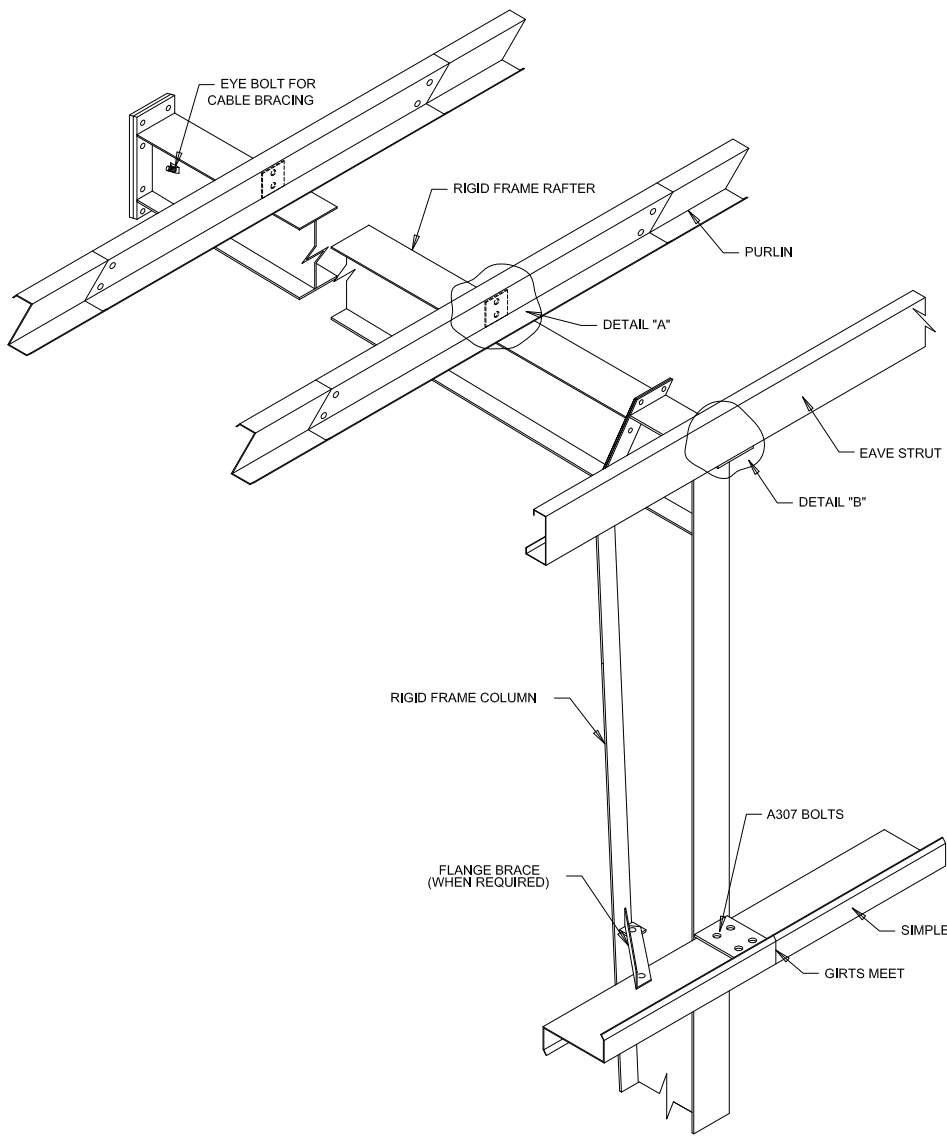
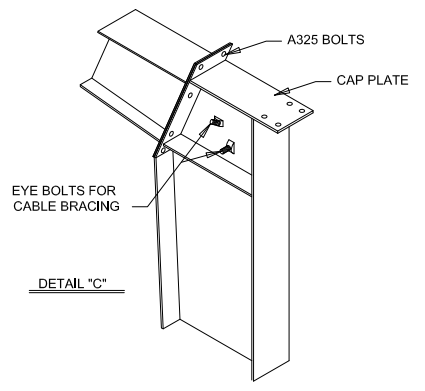
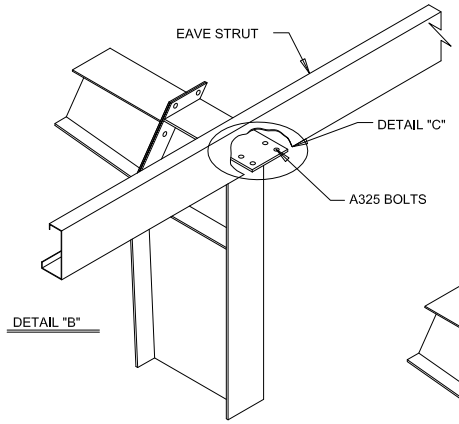
1. STANDARD BASE ANGLE (2x4) COMES IN 20'-0" LENGTHS. BASE ANGLE SHOULD BE OMITTED AT OVERHEAD DOORS, PERSONNEL DOORS, AND FRAMED OPENINGS. BASE ANGLE SHOULD BE ATTACHED USING NAIL ANCHORS FURNISHED BY SPIRKO MANUFACTURING.
2. BASE GIRTS (OPTIONAL) ARE FURNISHED CONTINUOUS FROM COLUMN TO COLUMN AND MUST BE FIELD CUT AT PERSONNEL DOORS.
3. BASE CHANNEL (OPTIONAL) WILL BE FURNISHED IN 20'-0" LENGTHS. OMIT BASE CHANNEL AT ALL OVER HEAD DOORS, PERSONNEL DOORS, AND FRAMED OPENINGS. FIELD CUT THE BASE CHANNEL AS NEEDED. BASE CHANNEL SHOULD BE ATTACHED USING WEDGE ANCHORS FURNISHED BY SPIRKO MANUFACTURING.
4. BASE CLOSURES DO NOT COME STANDARD AT ALL BASE CONDITIONS. HOWEVER, BASE CLOSURES CAN BE MARKED ON CONTRACT TO ADD TO YOUR BUILDING. MANUFACTURER DOES ADD BASE CLOSURES WHEN NO SHEET RECESS IS SPECIFIED AND WHEN THE BUILDING IS NOT INSULATED. BASE CLOSURES COME IN 3'-0" LENGTHS AND ARE PLACED AT THE PERIMETER OF THE BUILDING. OMIT BASE CLOSURES AT OVERHEAD DOORS, PERSONNEL DOORS, AND WHEN A SHEET RECESS IS USED (UNLESS SPECIFIED OTHERWISE)
5. ALL BASE MEMBERS ANCHORED DIRECTLY TO THE FLOOR MUST BE ANCHORED 3" FROM EACH END AND ON 2'-6" CENTERS BETWEEN.

DESCRIPTION		
EXAMPLES ON TYPICAL BASE CONDITIONS		
DRAWN BY #	ISSUE DATE	PAGE
DAW	1/8/2003 rev. 9/15/09	1

LOCATION	BOLT SIZE
PURLIN CONNECTION	A307 1/2" X 1 1/4"
GIRT CONNECTION	A307 1/2" X 1 1/4"
EAVE STRUT CONNECTION	A325 1/2" X 1 1/4"

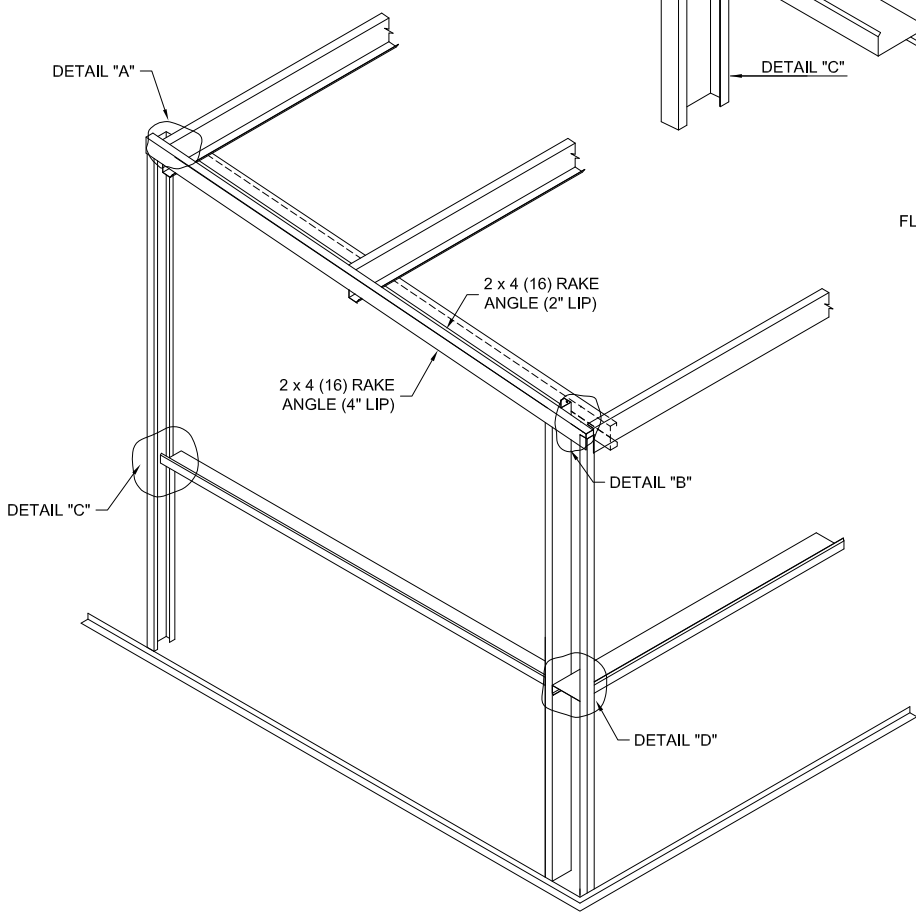
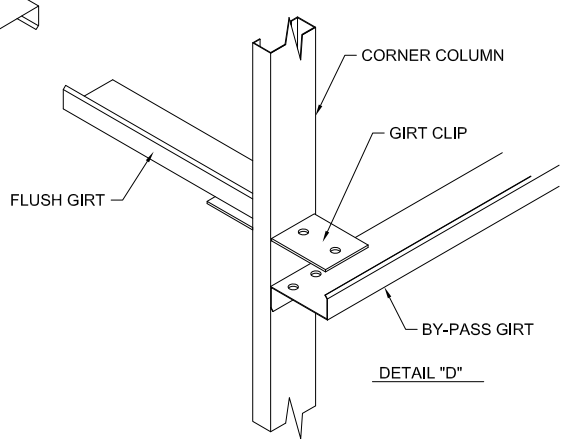
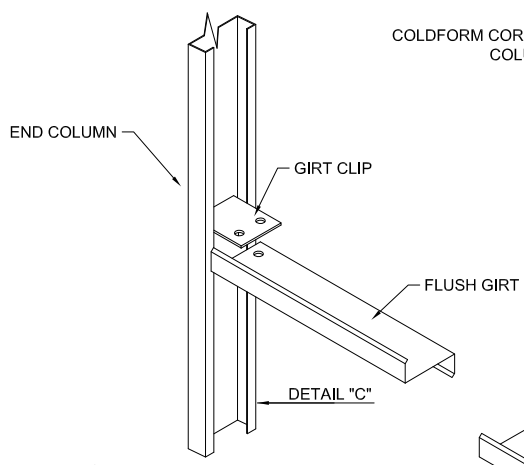
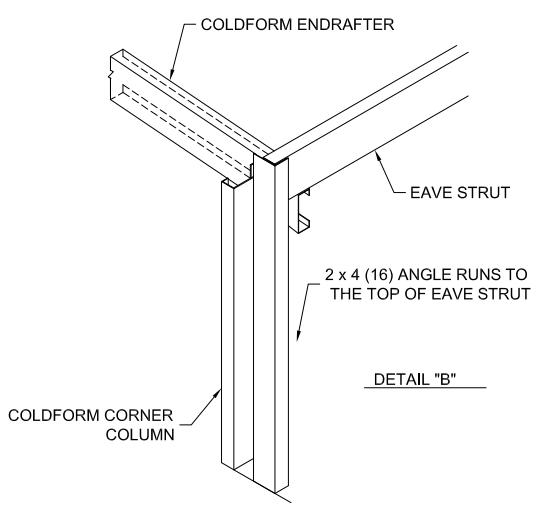
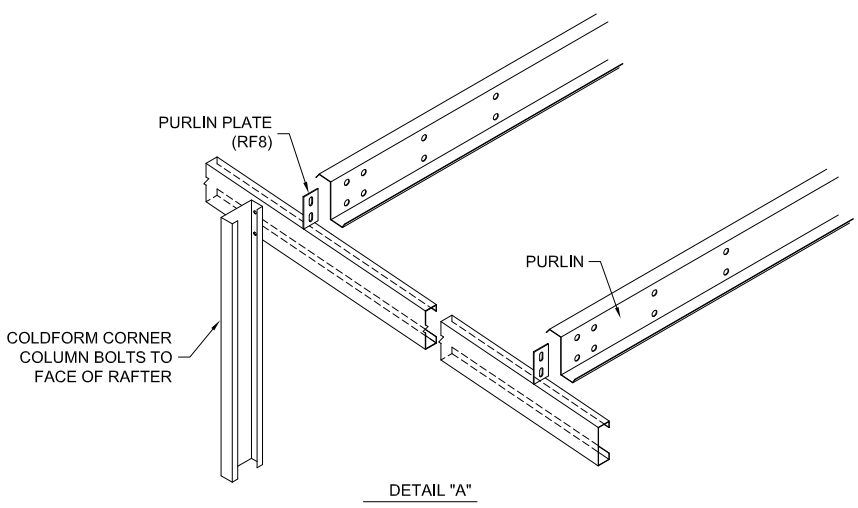


REFER TO ROOF FRAMING PLAN FOR PURLIN LAPS (MAY VARY)
(ONLY PLACE BOLTS IN THE DESIGNATED HOLES)



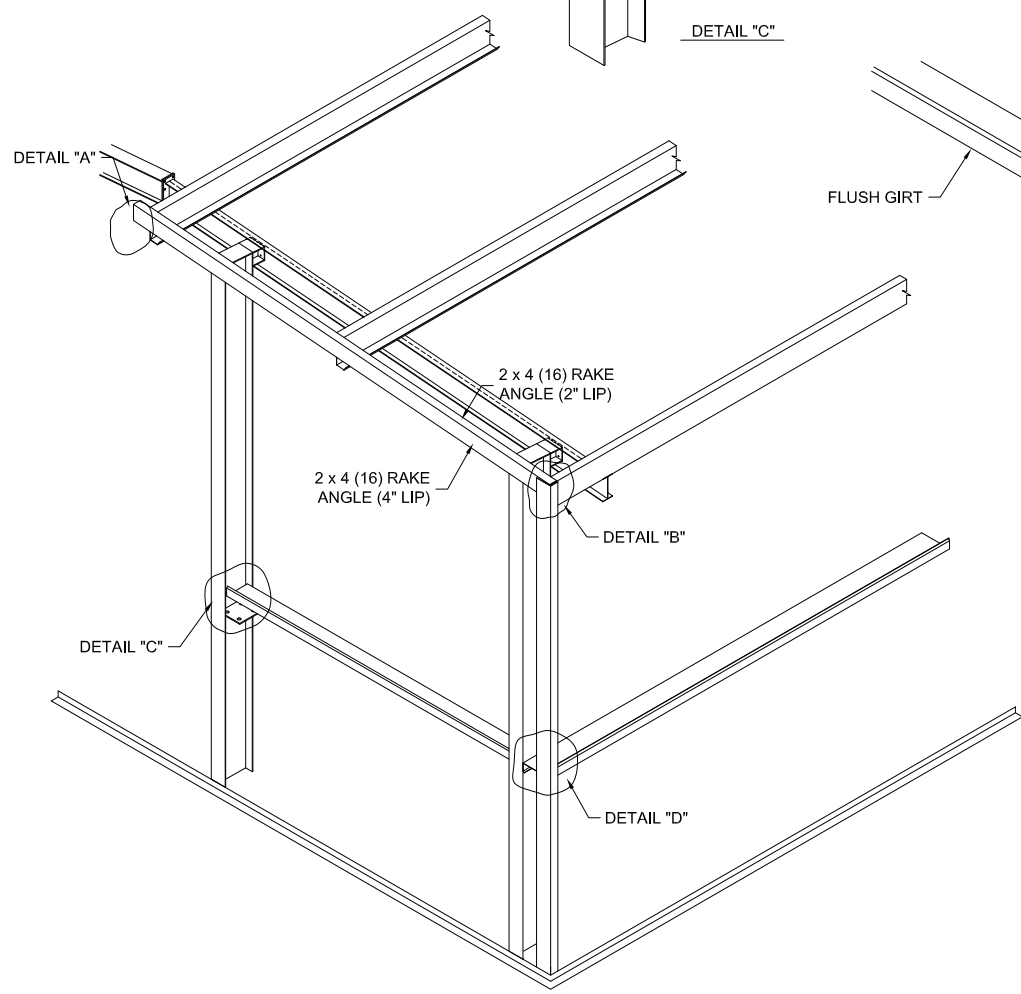
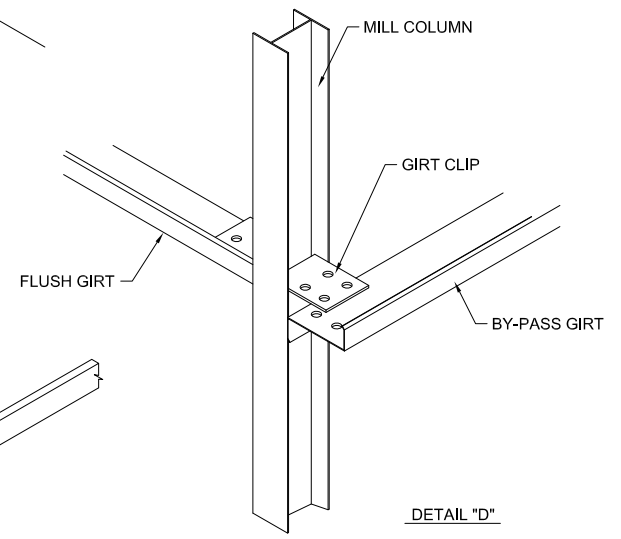
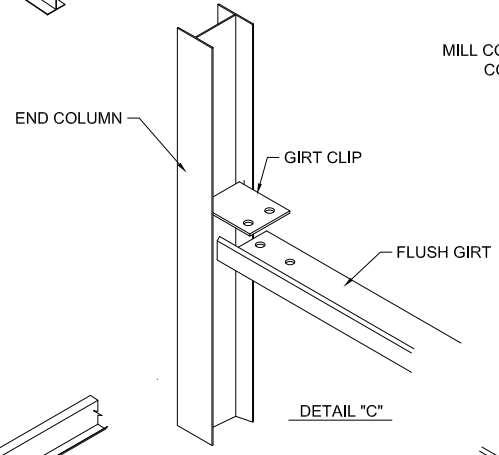
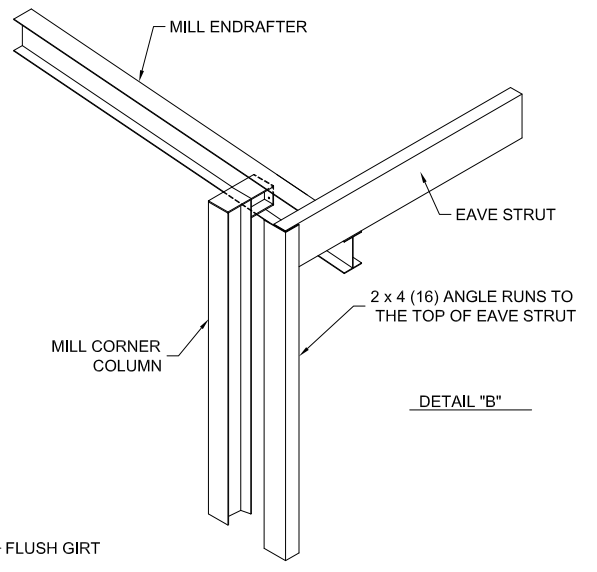
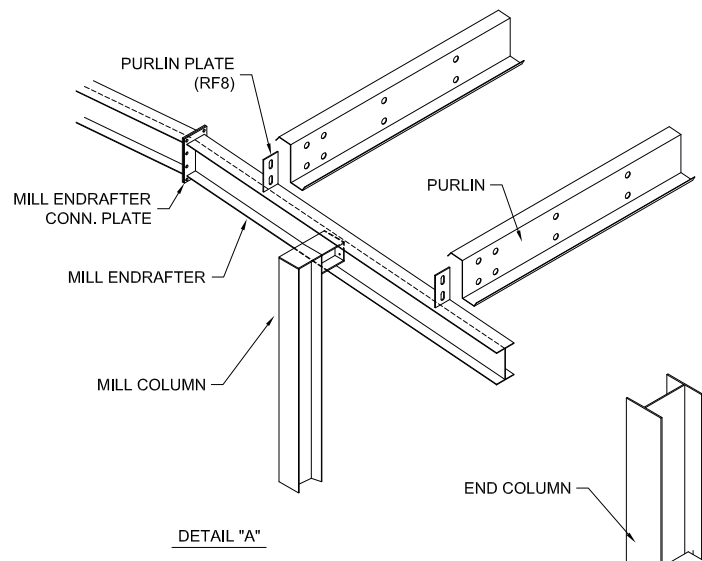
DESCRIPTION		
EXAMPLES ON TYPICAL RIGID FRAME COLUMN & RAFTER CONDITIONS		
DRAWN BY #	ISSUE DATE	PAGE
DAW	1/8/2003	2

LOCATION	BOLT SIZE
PURLIN CONNECTION	A307 1/2" x 1-1/4"
GIRT CONNECTION	A307 1/2" x 1-1/4"
EAVE STRUT CONNECTION	A325 1/2" x 1-1/4"

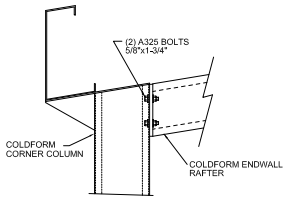


DESCRIPTION		
EXAMPLES ON TYPICAL COLDFORM ENDWALL COLUMN & RAFTER CONDITIONS		
DRAWN BY #	ISSUE DATE	PAGE
DAW	1/8/2003	3

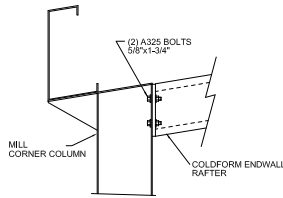
LOCATION	BOLT SIZE
PURLIN CONNECTION	A307 1/2" x 1-1/4"
GIRT CONNECTION	A307 1/2" x 1-1/4"
EAVE STRUT CONNECTION	A325 1/2" x 1-1/4"



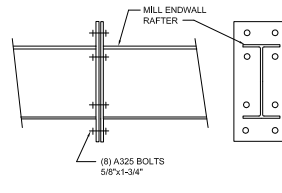
DESCRIPTION		
EXAMPLES ON TYPICAL MILL ENDWALL COLUMN & RAFTER CONDITIONS		
DRAWN BY #	ISSUE DATE	PAGE
DAW	1/8/2003	4



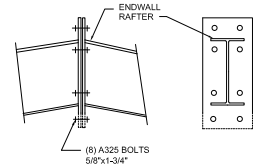
COLDFORM ENDWALL RAFTER TO ROTATED COLDFORM CORNER COLUMN



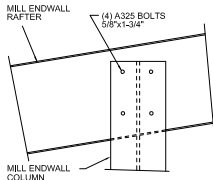
COLDFORM ENDWALL RAFTER TO ROTATED MILL CORNER COLUMN



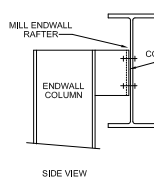
ENDWALL RAFTER SPLICE @ MID POINT CONNECTION



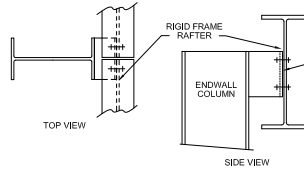
ENDWALL RAFTER SPLICE @ PEAK CONNECTION



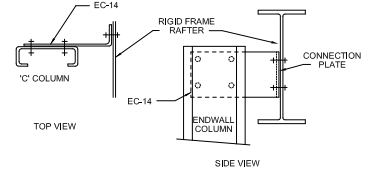
MILL ENDWALL RAFTER TO MILL COLUMN



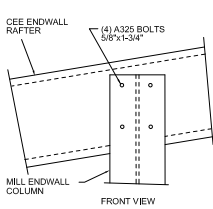
SIDE VIEW



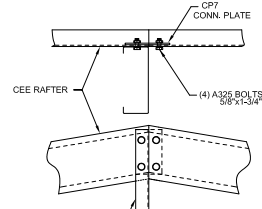
RIGID FRAME ENDWALL RAFTER TO MILL COLUMN @ PEAK



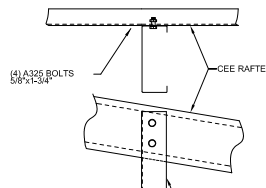
RIGID FRAME ENDWALL RAFTER TO COLDFORM COLUMN



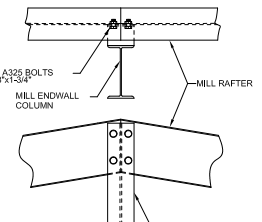
COLDFORM ENDWALL RAFTER TO MILL COLUMN



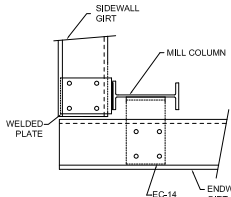
RAFTER SPLICE AT SURFACE CHANGE WITH COLUMN SUPPORT



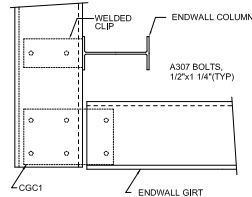
COLDFORM COLUMN CONNECTION TO COLDFORM ENDWALL RAFTER



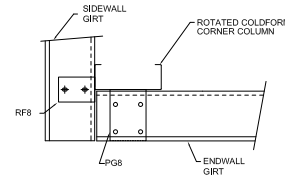
RAFTER SPLICE AT SURFACE CHANGE WITH COLUMN SUPPORT



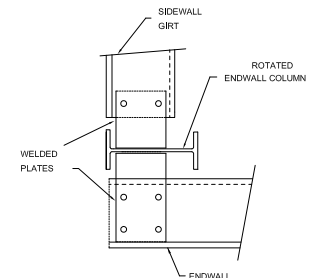
ROTATED MILL CORNER COLUMN TO BYPASS SIDEWALL GIRTS & 1-2" SET BACK



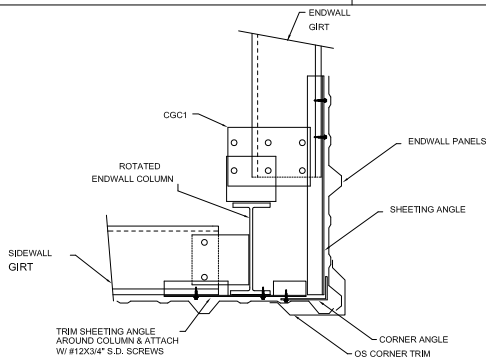
CORNER COLUMN W/GIRT TO GIRTS CONNECTION



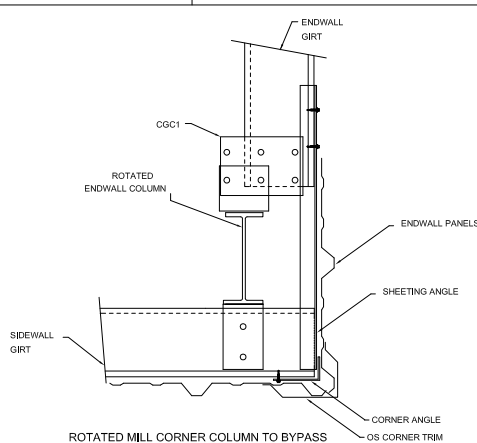
ROTATED COLDFORM CORNER COLUMN W/BYPASS SIDEWALL & ENDWALL GIRTS



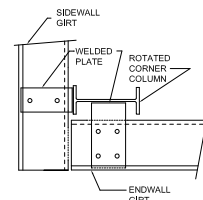
ROTATED MILL CORNER COLUMN TO FLUSH SIDEWALL GIRTS & 1-2" SET BACK



ROTATED MILL CORNER COLUMN TO FLUSH SIDEWALL GIRTS & 8" SET BACK



ROTATED MILL CORNER COLUMN TO BYPASS SIDEWALL GIRTS & 8" SET BACK



ROTATED MILL CORNER COLUMN TO BYPASS SIDEWALL GIRTS & 1-0" SET BACK

DESCRIPTION

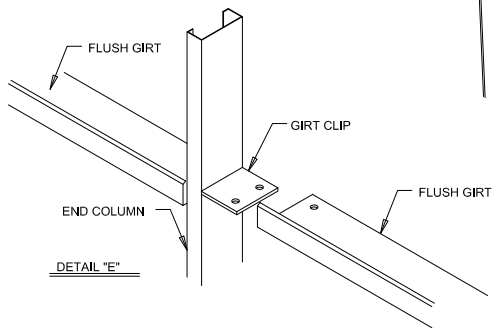
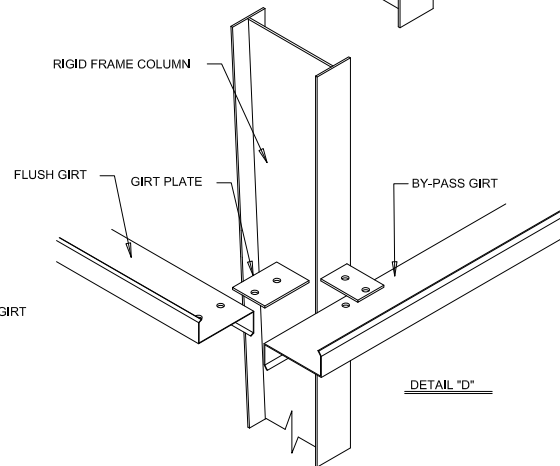
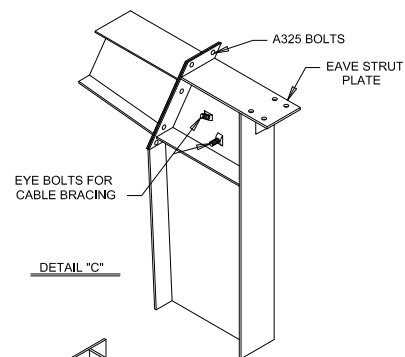
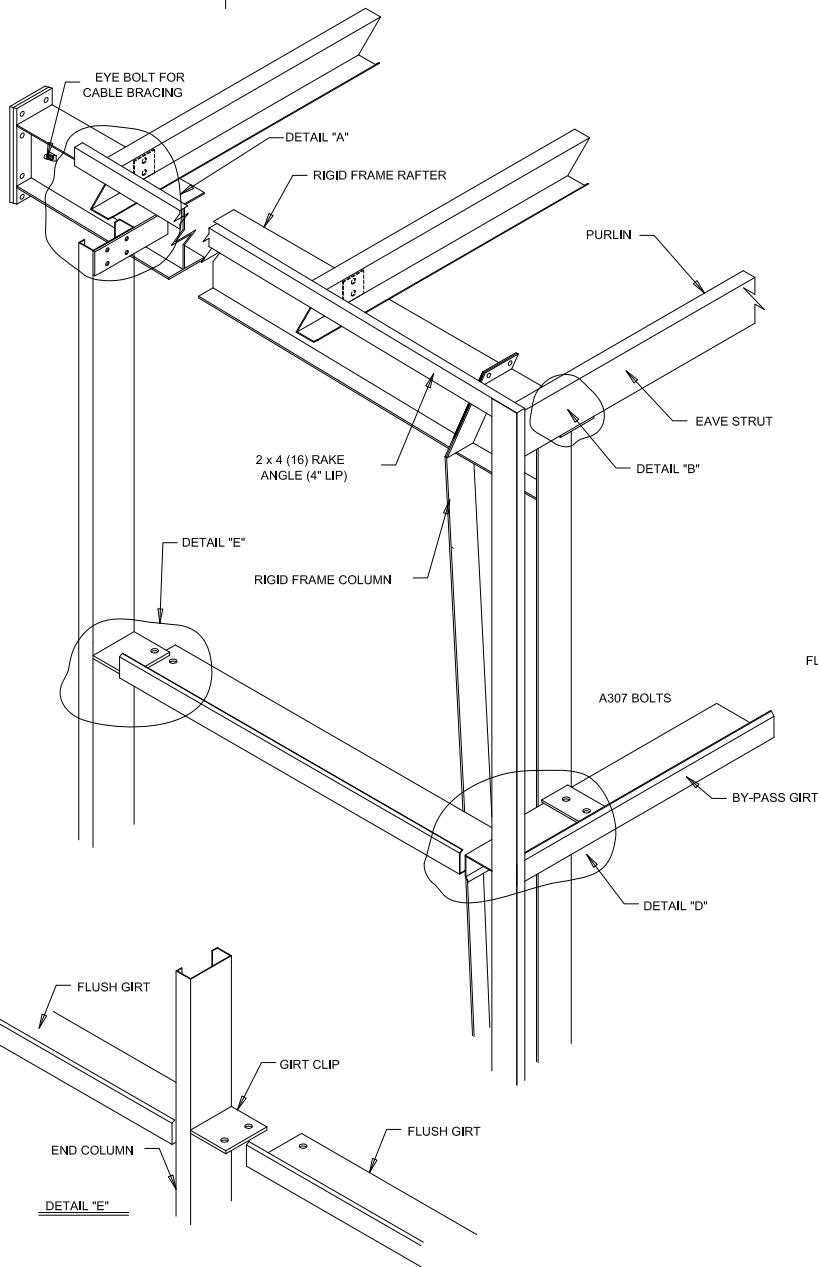
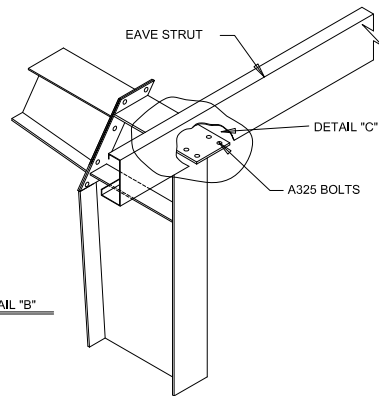
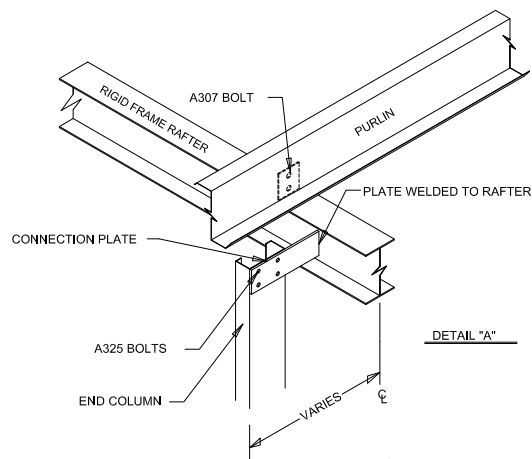
EXAMPLES ON TYPICAL ENDWALL CONDITION DETAILS

DRAWN BY #
DAW

ISSUE DATE
1/8/2003

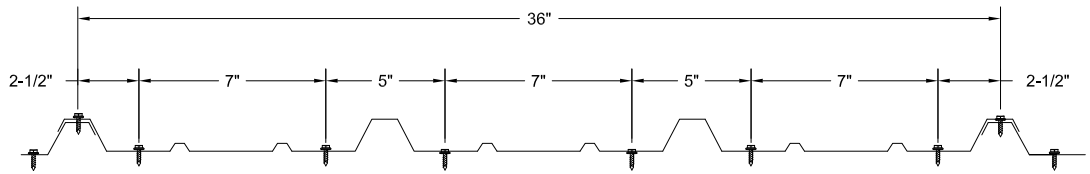
PAGE
5

LOCATION	BOLT SIZE
PURLIN CONNECTION	A307 1/2" X 1 1/4"
GIRT CONNECTION	A307 1/2" X 1 1/4"
EAVE STRUT CONNECTION	A325 1/2" X 1 1/4"



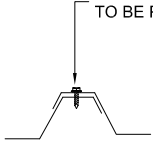
DESCRIPTION		
EXAMPLES ON TYPICAL RIGID FRAME ENDWALL		
DRAWN BY #	ISSUE DATE	PAGE
DAW	1/8/2003	6

WALL PANEL FASTENER SPACING

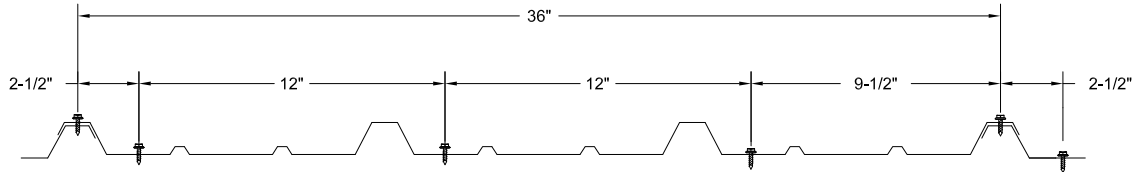


FASTENER SPACING AT RAKE, EAVE, AND BASE

STITCH FASTENER #14 SCREW TO BE PLACED AT 2'-6" O.C.

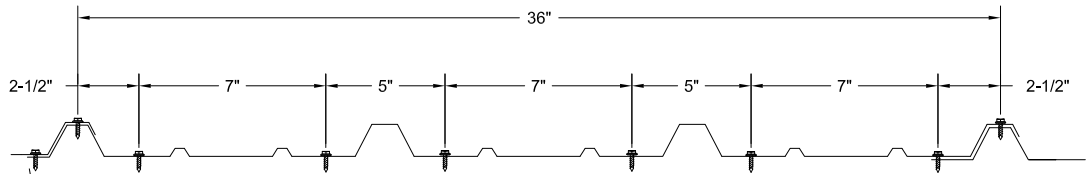


SIDLAP DETAIL



INTERMEDIATE FASTENER SPACING

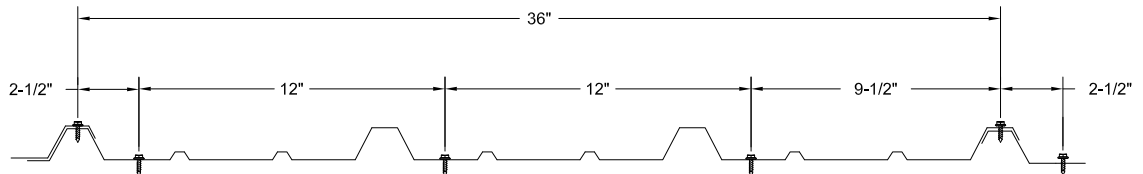
ROOF PANEL FASTENER SPACING



FASTENER SPACING AT ENDLAP

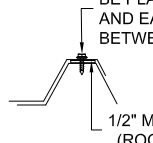
PURLIN BEARING FEATURE

NOTE: IF A UL90 RATED ROOF IS REQUIRED THESE FASTENER SPACING MUST BE FOLLOWED. (SPECIAL MATERIALS ARE REQUIRED FOR SKYLIGHTS WITH UL90 RATED ROOF.)



INTERMEDIATE FASTENER SPACING

STITCH FASTENER #14 SCREW TO BE PLACED OVER EACH PURLIN AND EAVE STRUT AND 2'-6" CENTERS BETWEEN.



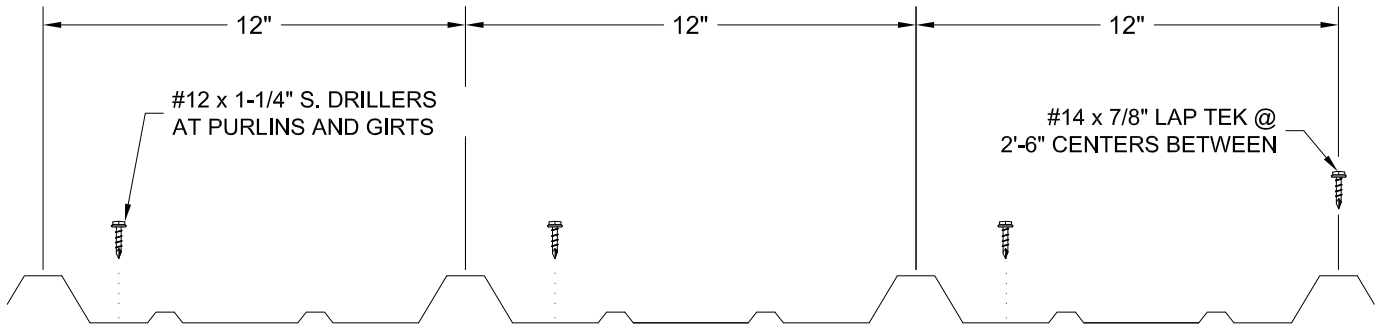
SIDLAP DETAIL

1/2" MASTIC TAPE (ROOF ONLY)

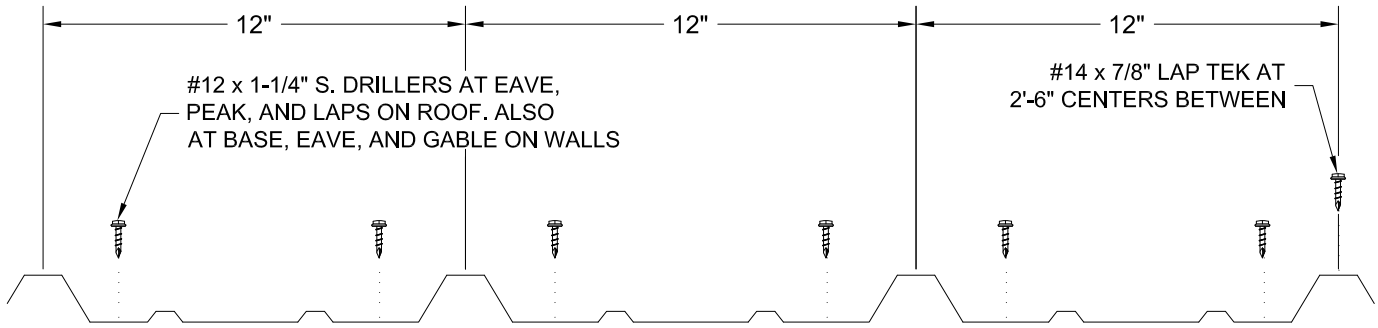
NOTE: IF A UL90 RATED ROOF IS REQUIRED PLACE STITCH FASTENER #14 x 7/8" SCREW OVER EACH PURLIN AND EAVE STRUT AND 1'-8" CENTERS BETWEEN.

WARNING
THE ROOF SHOULD BE SWEEP CLEAN OF ANY DRILL SHAVINGS AT THE END OF EACH DAY TO PREVENT RUST.

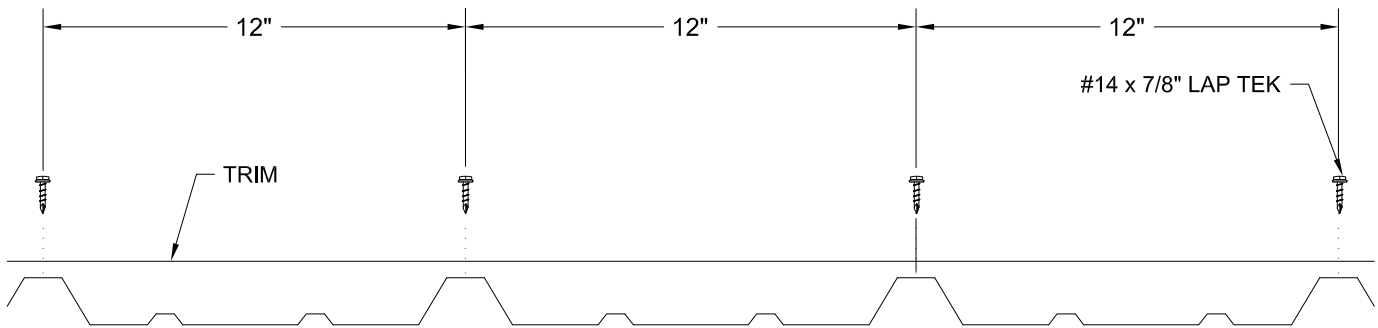
DESCRIPTION		
EXAMPLES ON TYPICAL FASTENER SPACING		
DRAWN BY #	ISSUE DATE	PAGE
DAW	1/8/2003	7



PATTERN #1
AT INTERMEDIATE SUPPORT



PATTERN #2
AT EAVE OR ENDLAP

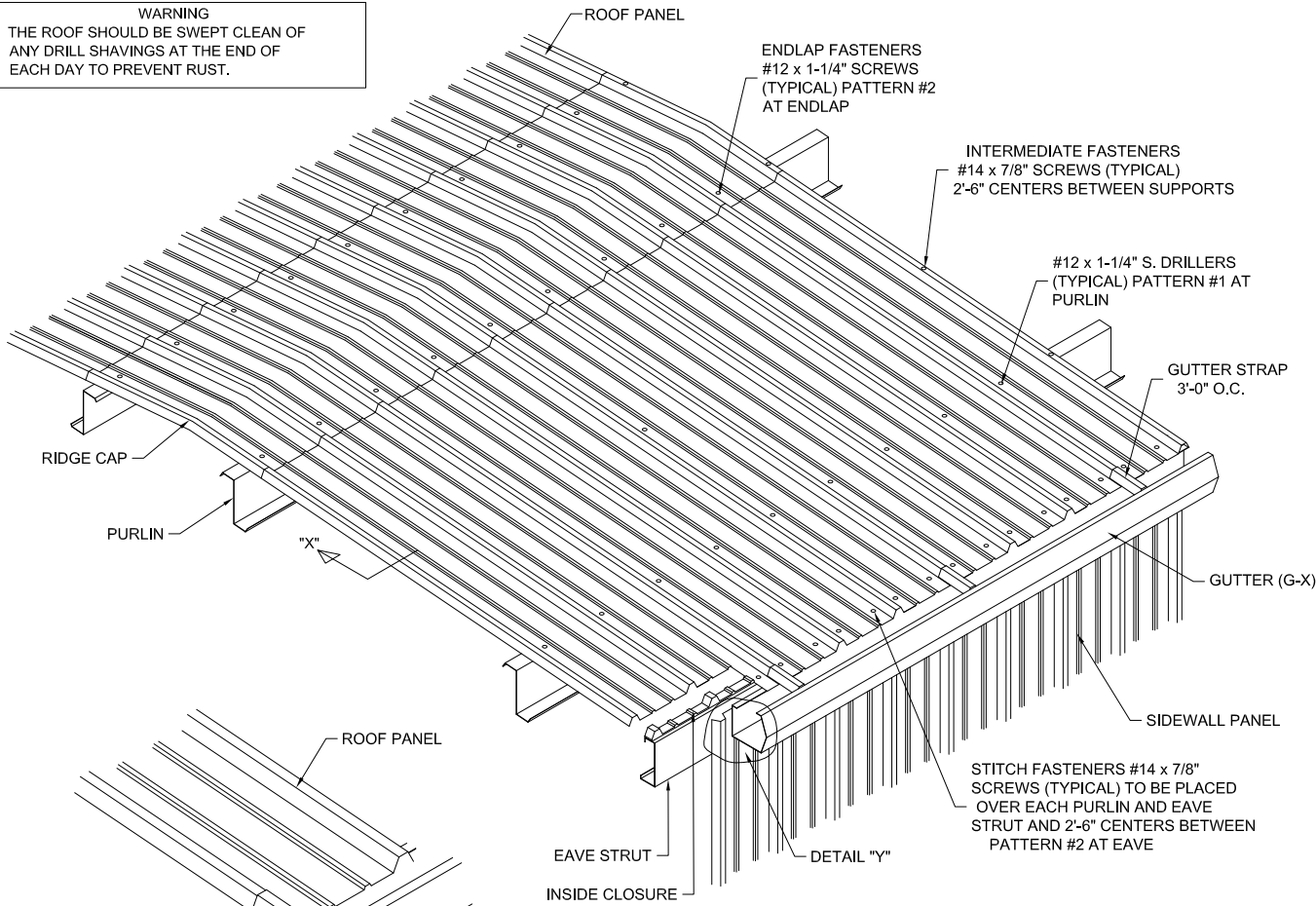


PATTERN #3
AT TRIM AT ROOF

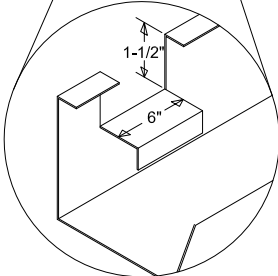
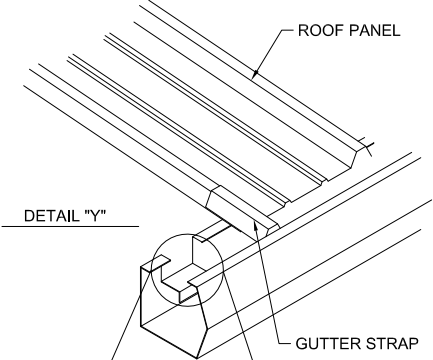
WARNING
THE ROOF SHOULD BE SWEEP CLEAN OF ANY DRILL SHAVINGS AT THE END OF EACH DAY TO PREVENT RUST.

DESCRIPTION		
EXAMPLES ON TYPICAL FASTENER PATTERNS		
DRAWN BY #	ISSUE DATE	PAGE
DAW	1/8/2003	8

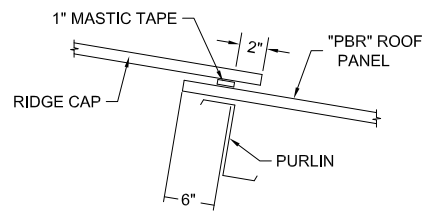
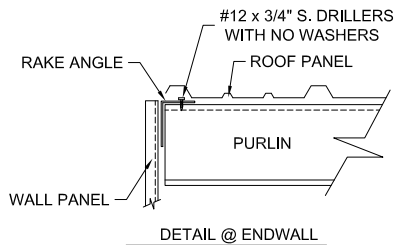
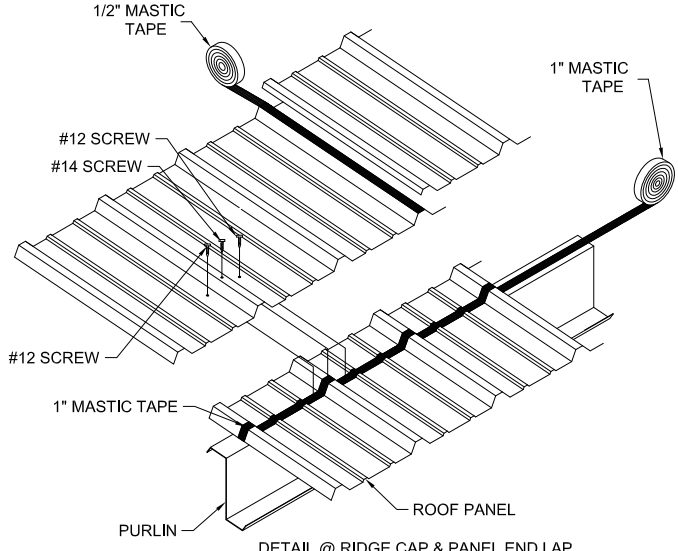
WARNING
 THE ROOF SHOULD BE SWEEPED CLEAN OF ANY DRILL SHAVINGS AT THE END OF EACH DAY TO PREVENT RUST.



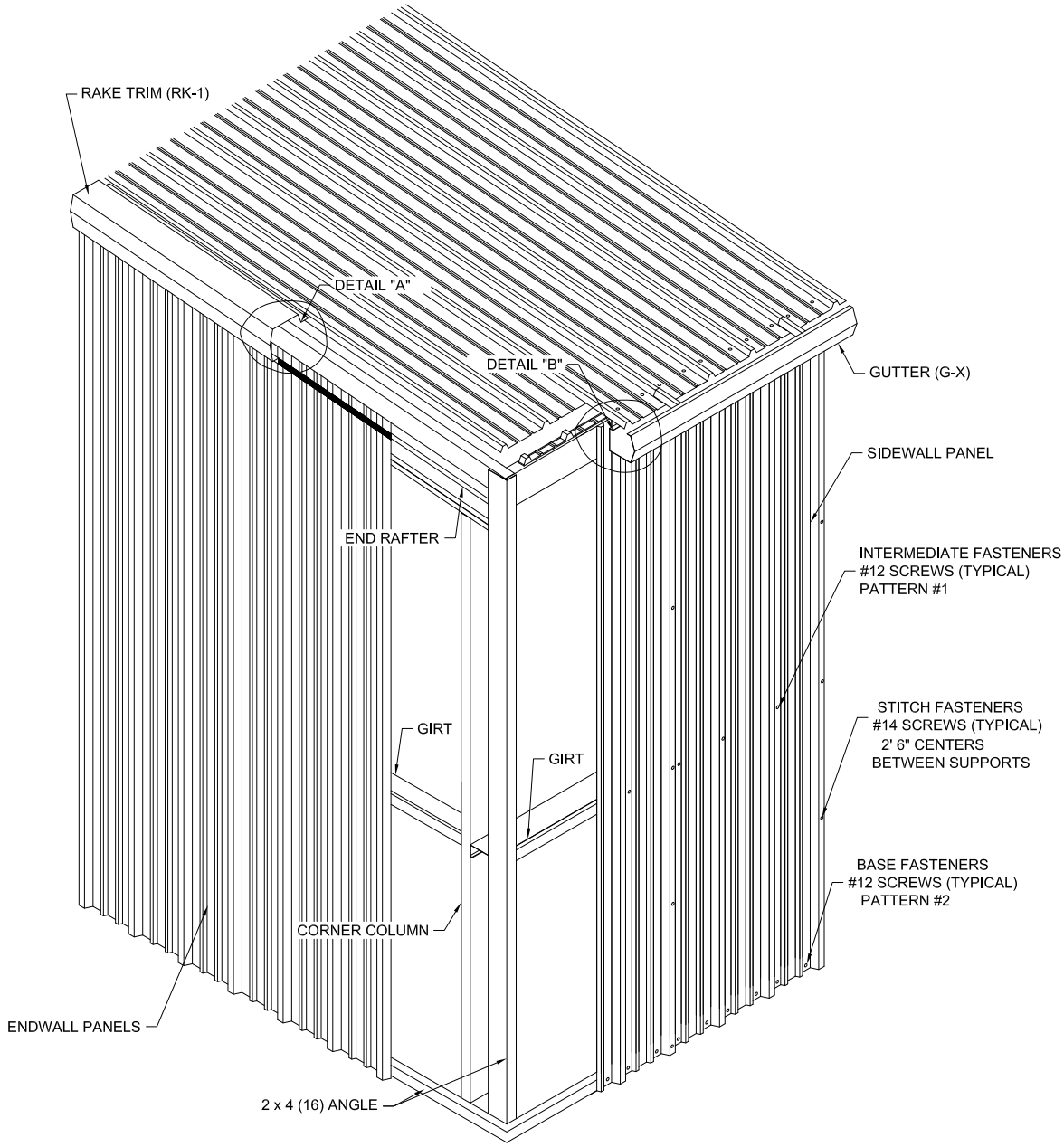
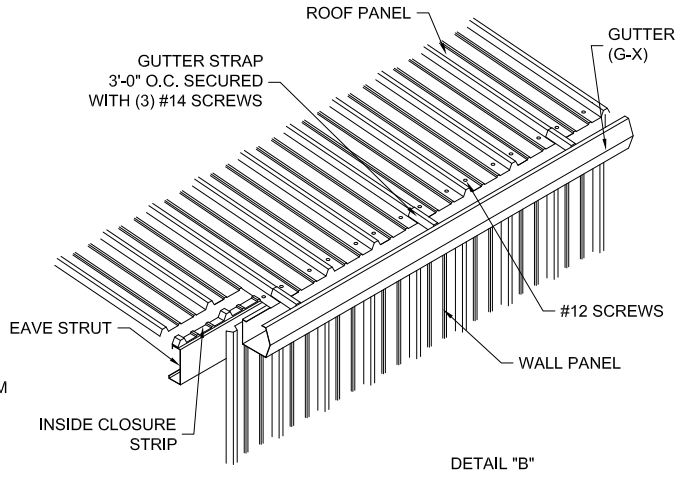
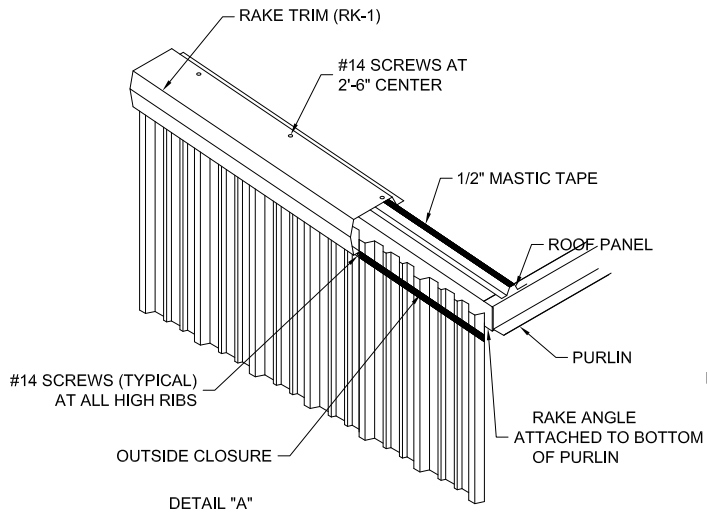
NOTE: ROOF PANELS TO HAVE A 4" OVERHANG @ EAVE.



(OPTIONAL) OVERFLOW WINDOW FIELD BEND @ 10'-0" O.C.

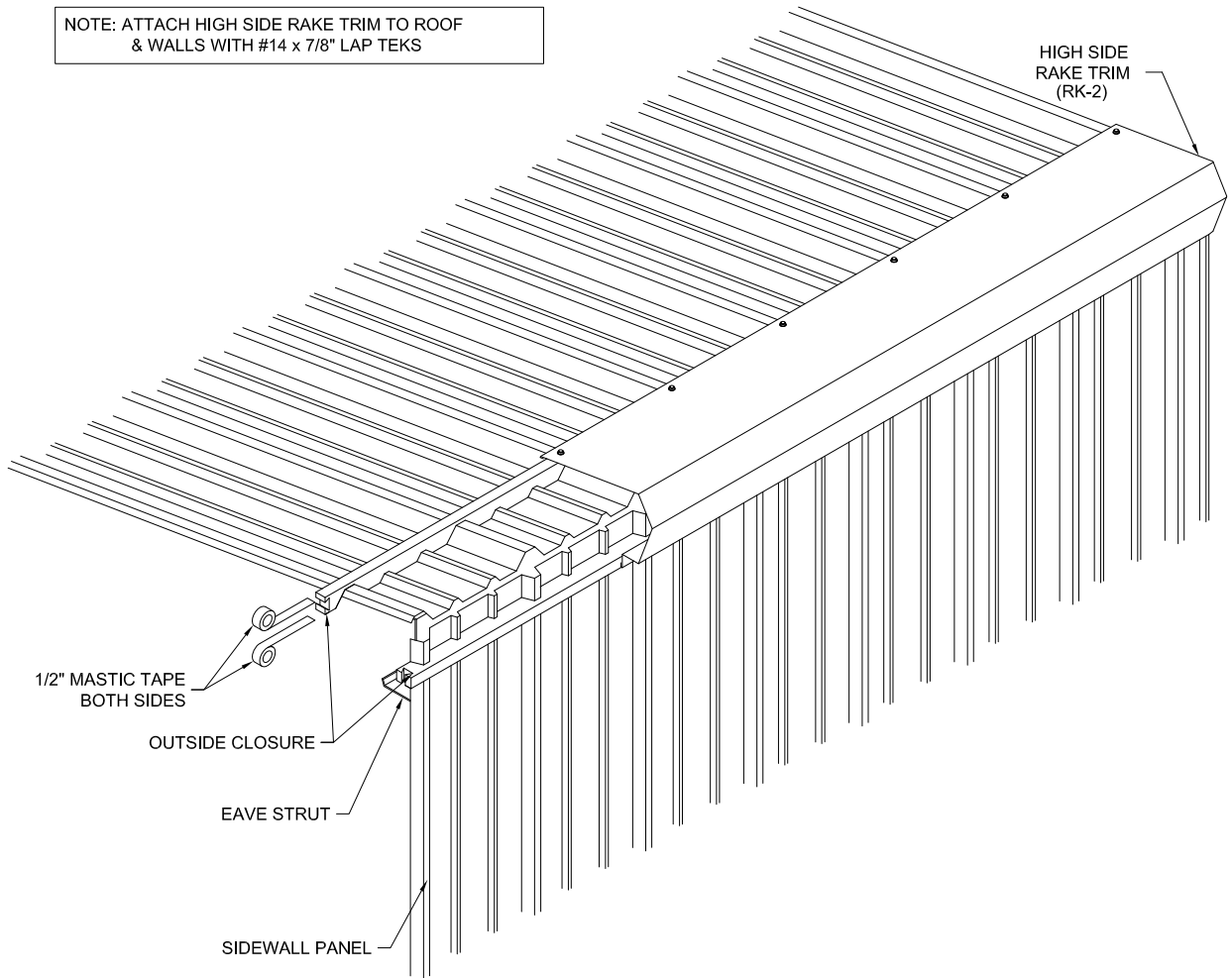


DESCRIPTION		
ROOF PANEL INSTALLATION DETAILS		
DRAWN BY #	ISSUE DATE	PAGE
DAW	1/8/2003	9



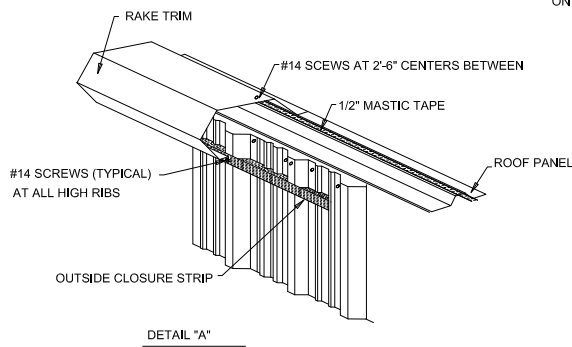
DESCRIPTION		
WALL PANEL INSTALLATION W/ GUTTER DETAILS		
DRAWN BY #	ISSUE DATE	PAGE
DAW	1/8/2003	10

NOTE: ATTACH HIGH SIDE RAKE TRIM TO ROOF
& WALLS WITH #14 x 7/8" LAP TEKS



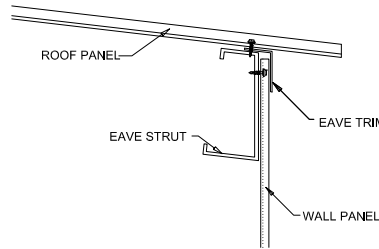
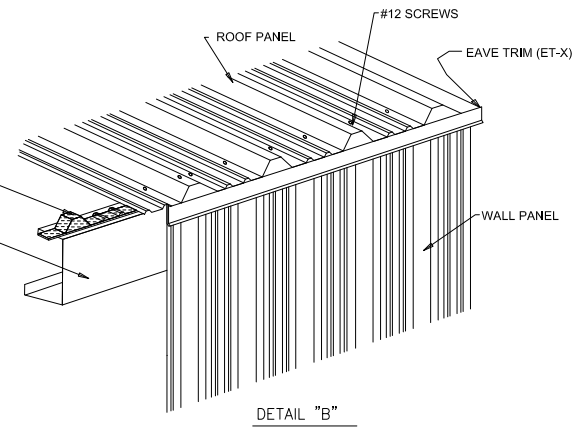
HIGH SIDE CONDITION OF SINGLE SLOPE BUILDING'S

DESCRIPTION		
HIGH SIDE RAKE TRIM INSTALLATION DETAIL		
DRAWN BY #	ISSUE DATE	PAGE
DAW	1/8/2003	11



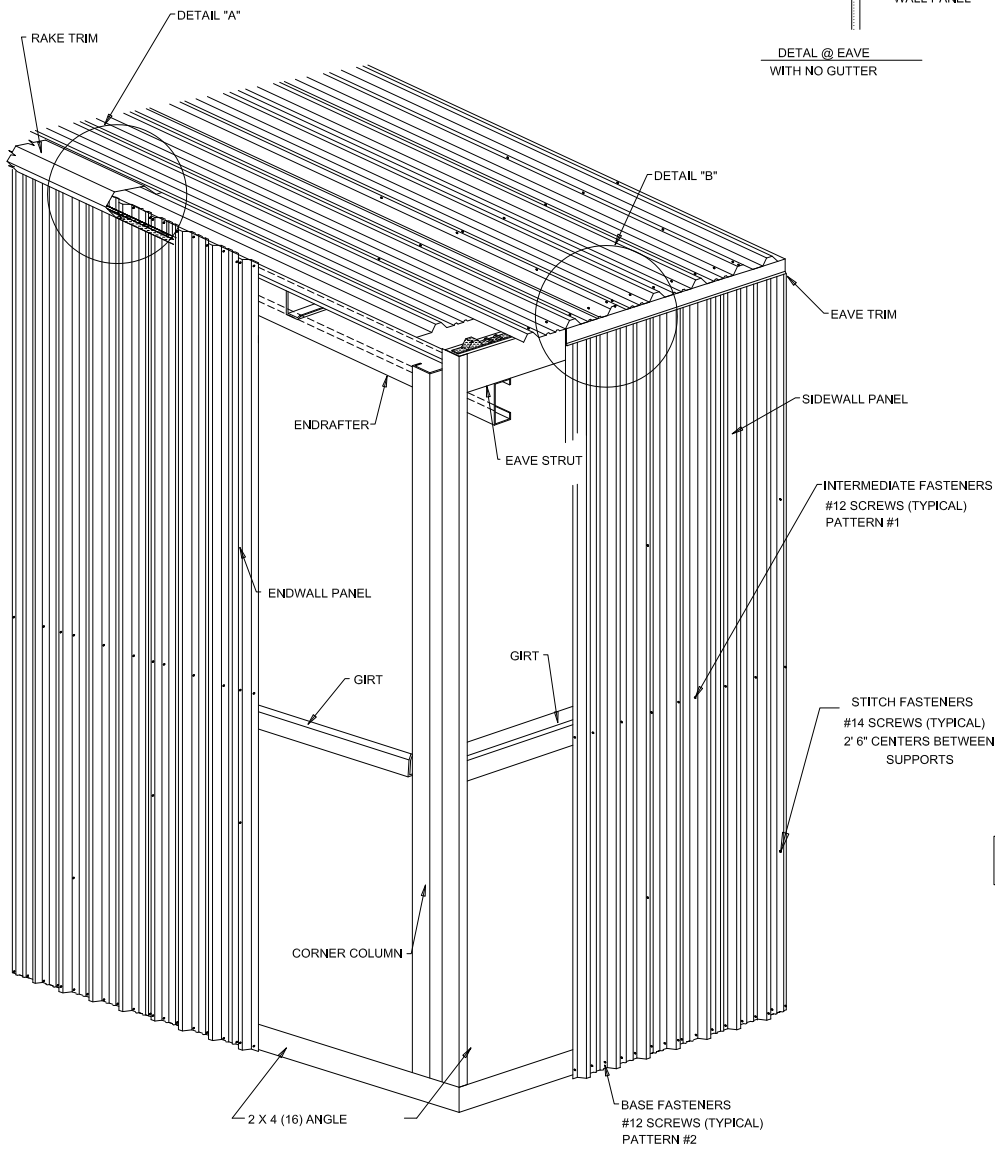
INSIDE CLOSURE STRIP
(USE ONE RUN OF 1/2" MASTIC TAPE
ON TOP AND BELOW INSIDE CLOSURE)

EAVE STRUT



DETAIL @ EAVE
WITH NO GUTTER

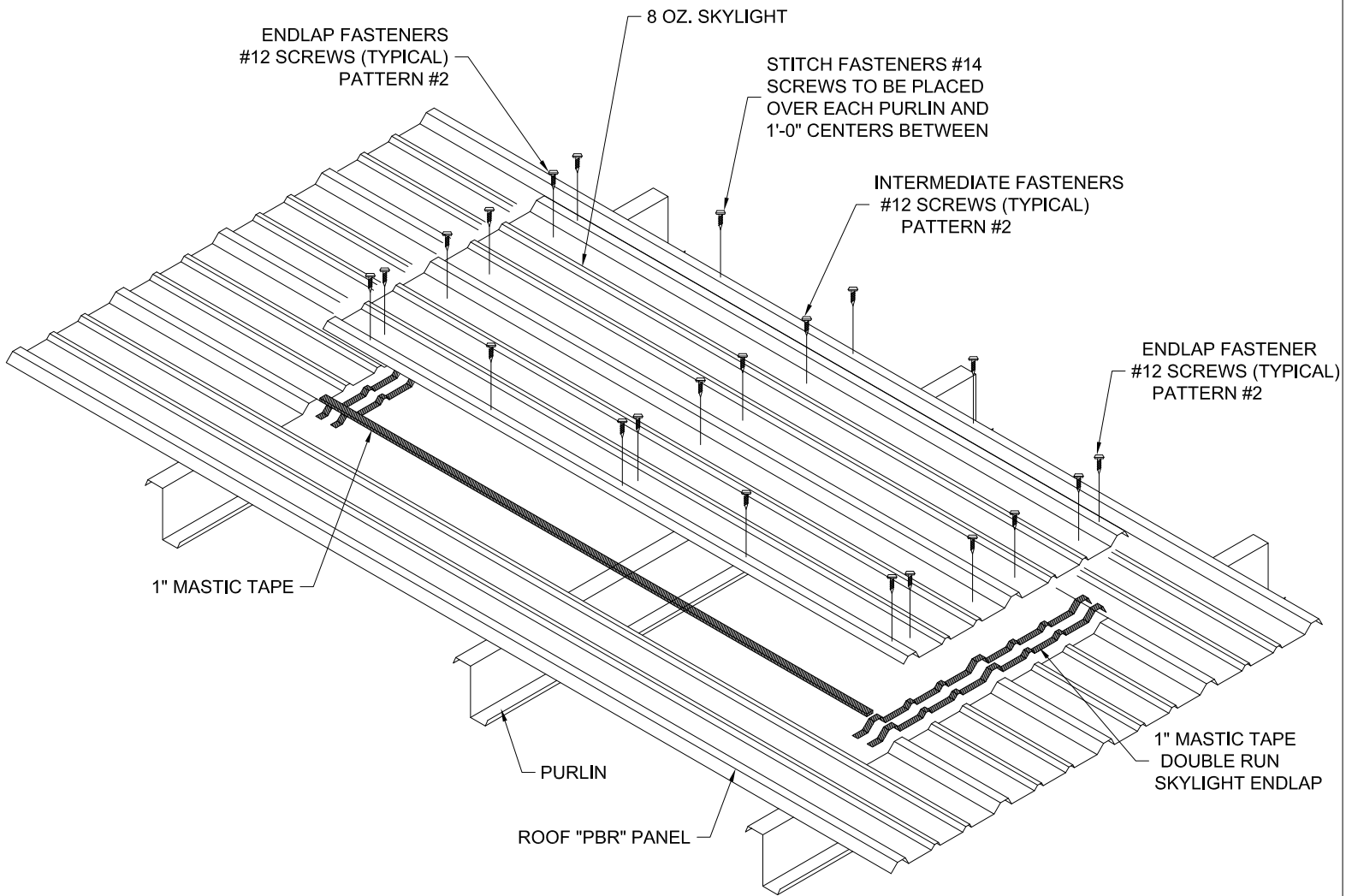
NOTE: FOR FASTENER PLACEMENT REFER TO
FASTENER SPACING ON PAGE 6 AND
FASTENER PATTERNS ON PAGE 7.



NOTE: WALL FASTENERS TO BE COLOR
COATED TO COORDINATE WITH PANELS.

DESCRIPTION		
WALL PANEL INSTALLATION WITHOUT GUTTER DETAILS		
DRAWN BY #	ISSUE DATE	PAGE
DAW	1/8/2003	12

WARNING
 THE ROOF SHOULD BE SWEEP CLEAN OF
 ANY DRILL SHAVINGS AT THE END OF
 EACH DAY TO PREVENT RUST.



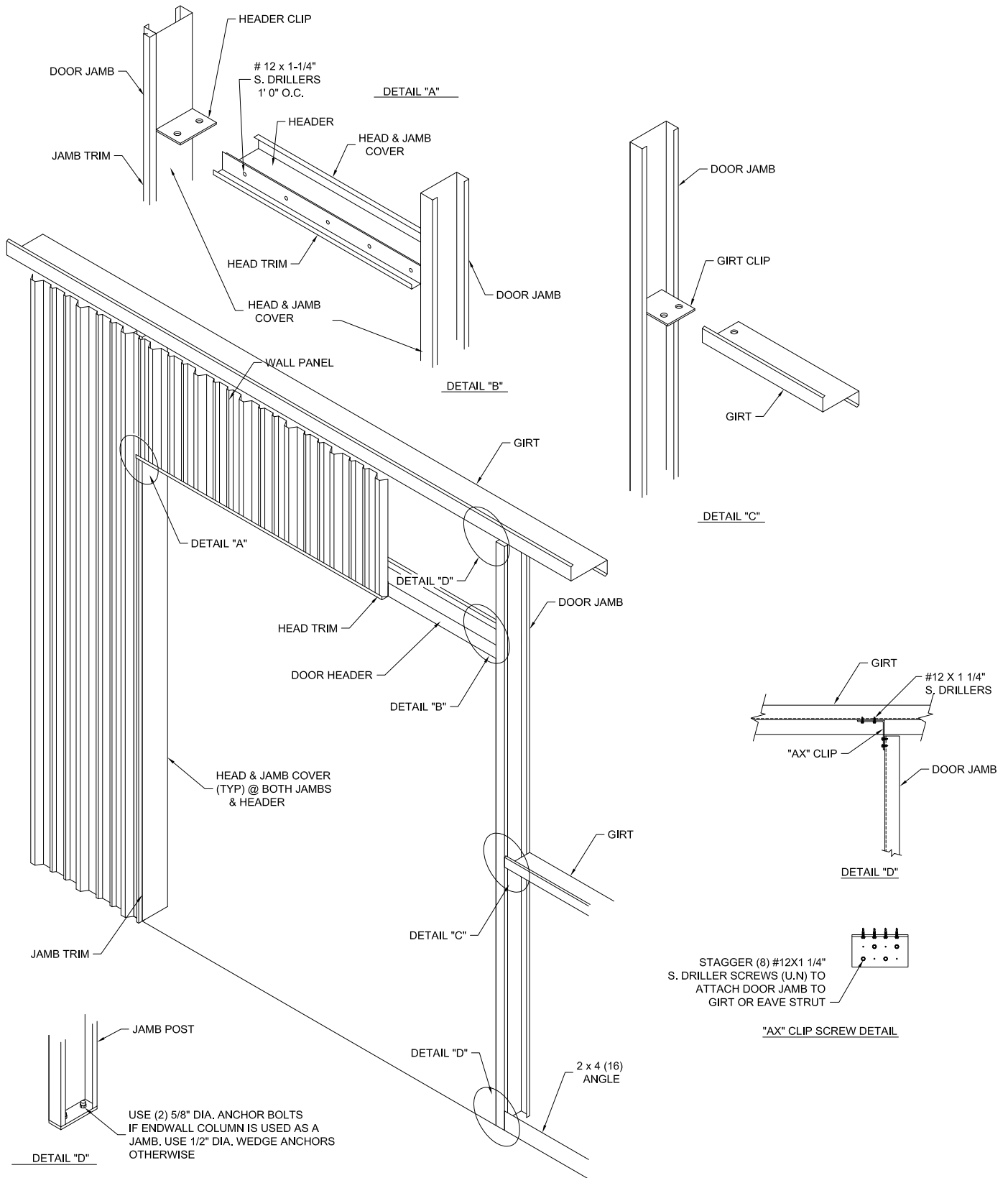
NOTE: SKYLIGHT TRIM WILL BE SHIPPED IF REQUIRED.
 ONLY REQUIRED WITH INSULATION.

NOTE: SEE ERECTION DRAWINGS FOR
 SKYLIGHT LOCATION & LAPS.

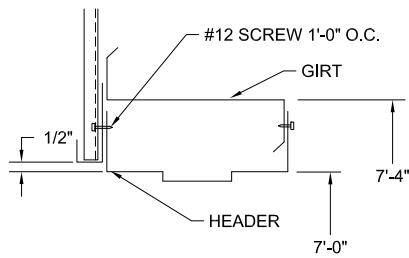
NOTE: SIDELAP FIBERGLASS SKYLIGHT PANELS
 ON TOP OF METAL ROOF PANELS.

NOTE: FOR FASTENER PLACEMENT REFER TO
 FASTENER SPACING ON PAGE 6 AND
 FASTENER PATTERNS ON PAGE 7.

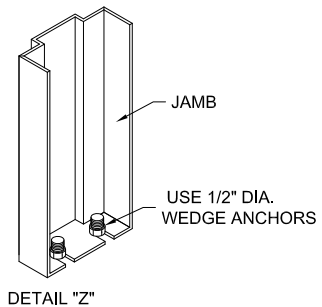
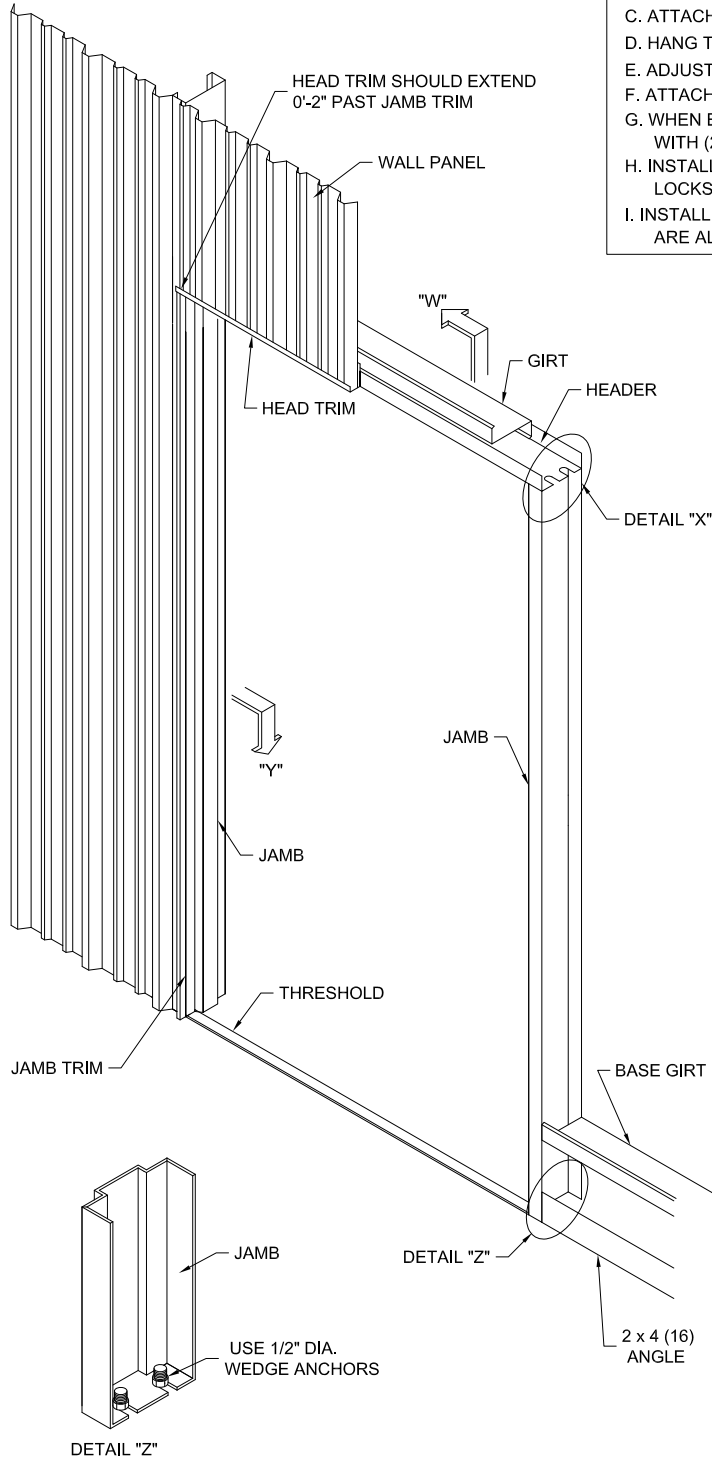
DESCRIPTION		
SKYLIGHT PANEL INSTALLATION DETAILS		
DRAWN BY #	ISSUE DATE	PAGE
DAW	1/8/2003	13



DESCRIPTION		
FRAMED OPENING INSTALLATION DETAILS		
DRAWN BY #	ISSUE DATE	PAGE
DAW	1/8/2003	14



SECTION "W"

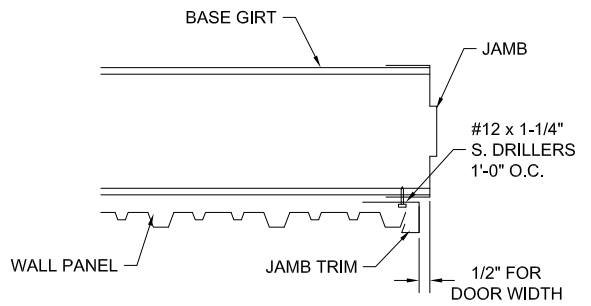


GENERAL NOTES

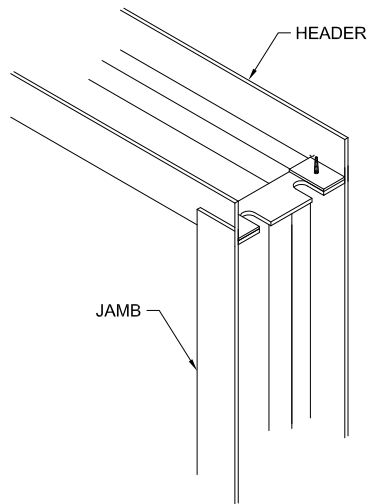
1. WALK DOORS ARE TO BE FIELD LOCATED BEFORE ATTACHING THE WALL PANELS.
2. DOOR FRAMES ARE SHIPPED UNASSEMBLED FOR FIELD ASSEMBLY.
3. WHEN OPTIONAL BASE GIRT IS USED, 2 x 4 BASE ANGLE IS NOT FURNISHED. (UNLESS SPECIFIED OTHERWISE ON CONTRACT.)
4. THE FOLLOWING INSTALLATION PROCEDURE IS FOR INSTALLING A DOOR UNDER STANDARD CONDITIONS.

INSTALLATION

- A. ASSEMBLE THE DOOR FRAME. ATTACH HEADER TO JAMB WITH THE BOLTS AND NUTS FURNISHED WITH THE FRAME KIT.
- B. SET FRAME IN PLACE, PLUMB HINGE JAMB AND ANCHOR TO FOUNDATION.
- C. ATTACH HEADER TO GIRT WITH (2) #12 x 1-1/4" SCREWS @ 1'-0" O.C.
- D. HANG THE DOOR LEAF.
- E. ADJUST THE STRIKER JAMB TO THE DOOR FRAME WITH #12 SCREWS.
- F. ATTACH HEAD AND JAMB TRIM TO THE DOOR FRAME WITH # 12 SCREWS.
- G. WHEN BASE GIRT IS USED, FIELD CUT @ DOOR AND ATTACH TO JAMBS WITH (2) # 12 SCREWS. -SEE SECTION "Y"
- H. INSTALL THE LOCKSET USING THE INSTRUCTIONS INCLUDED WITH THE LOCKSET.
- I. INSTALL PRE-NOTCHED THRESHOLD UTILIZING THE SPRING CLIPS WHICH ARE ALREADY INSTALLED IN THE THRESHOLD.



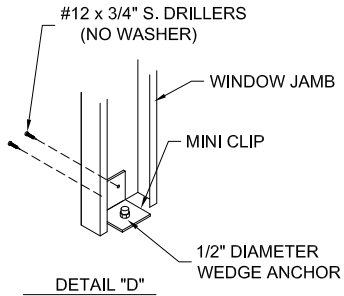
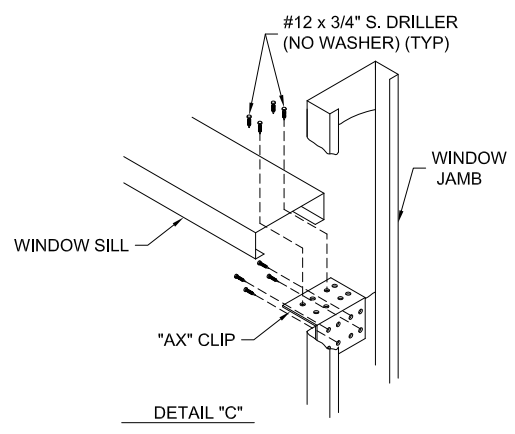
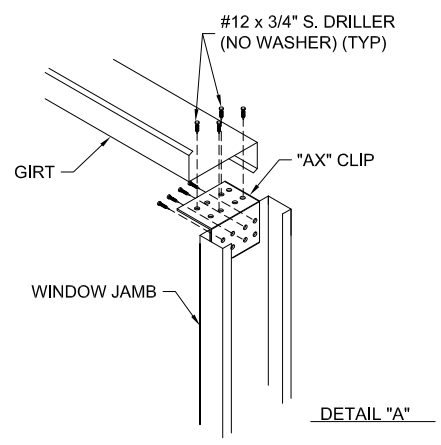
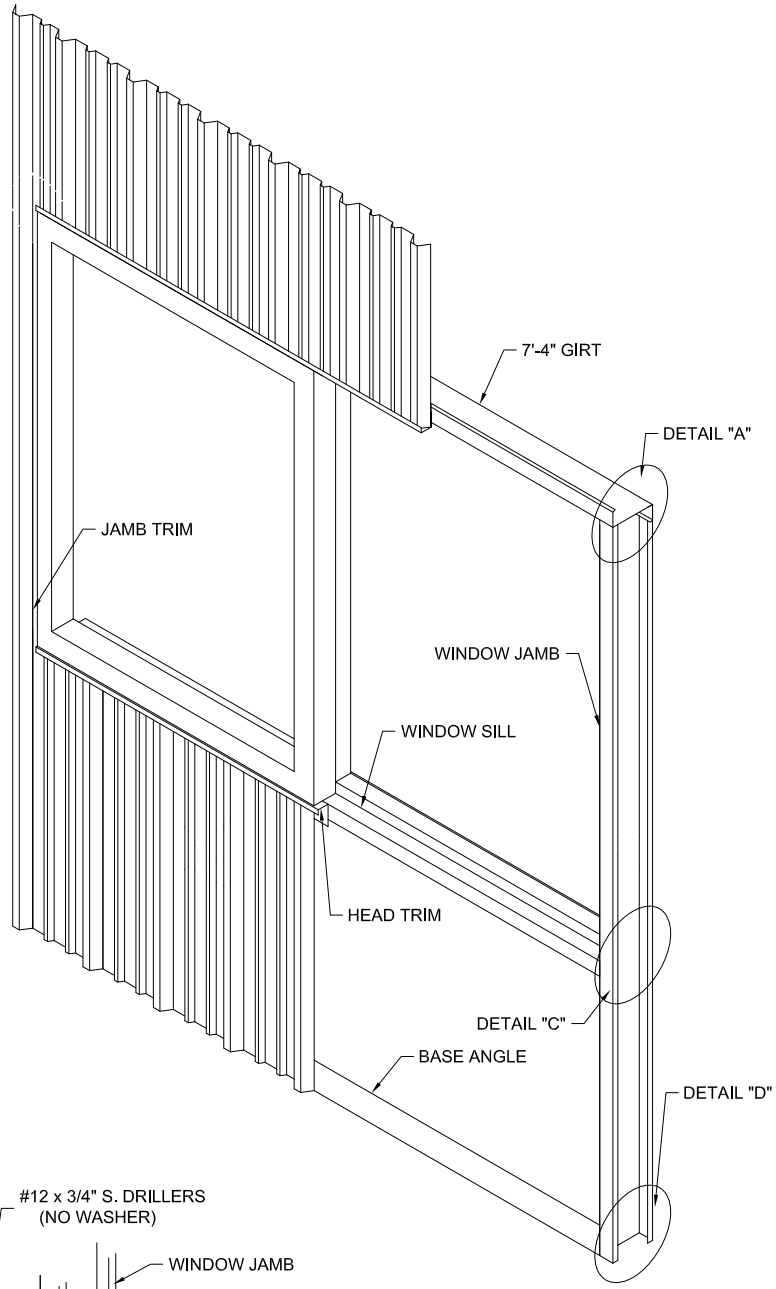
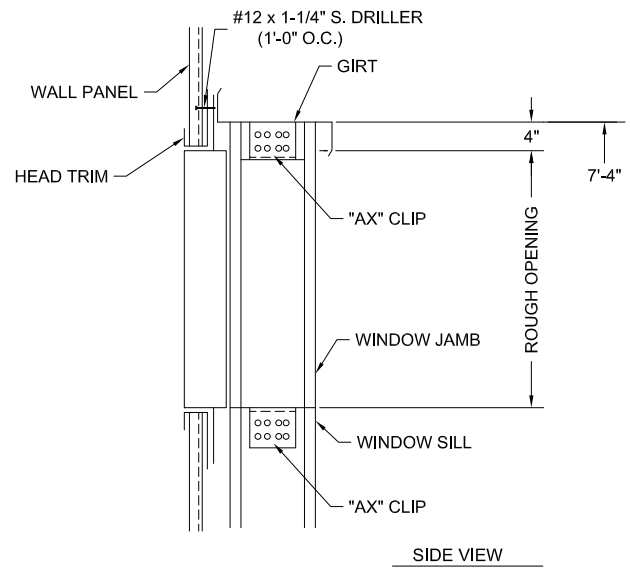
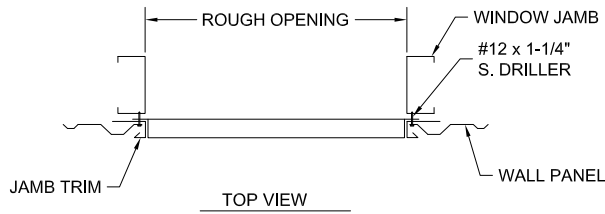
SECTION "Y"



DETAIL "X"

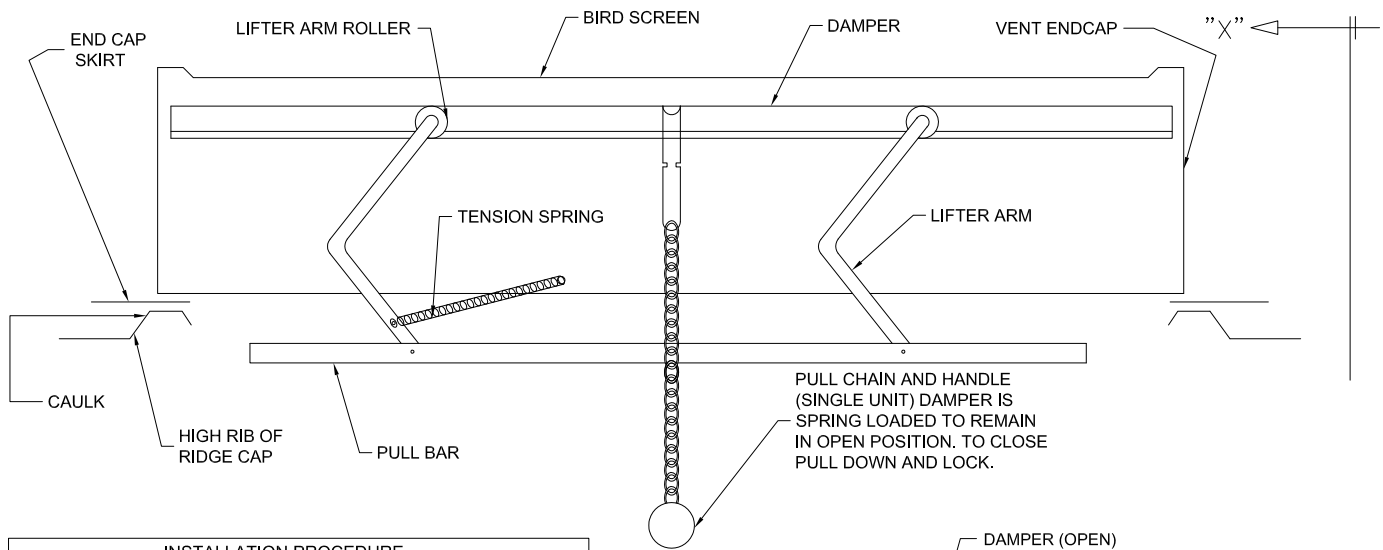
DESCRIPTION
WALKDOOR INSTALLATION DETAILS

DRAWN BY #	ISSUE DATE	PAGE
DAW	1/8/2003	15



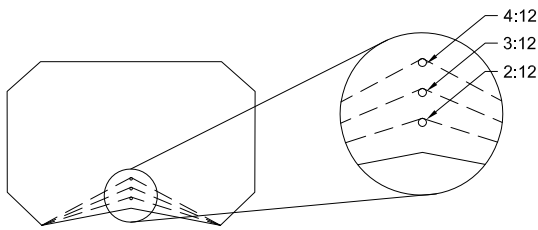
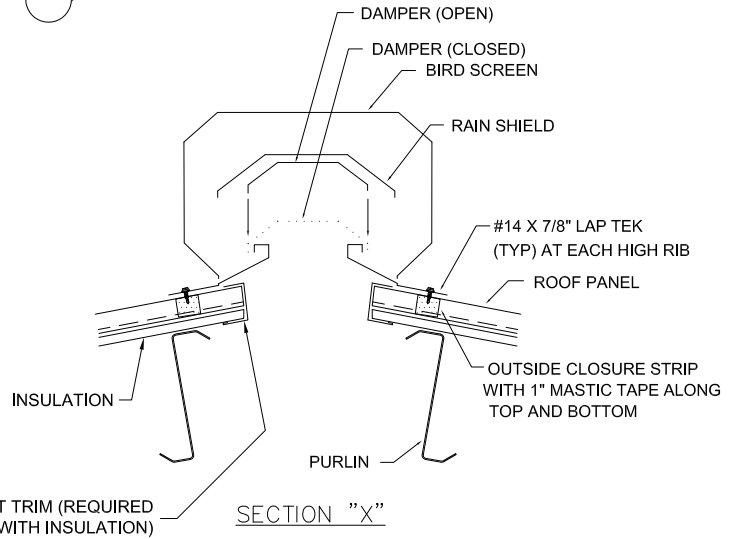
- NOTES TO ERECTOR**
1. ALL WINDOW SUB-FRAMING WILL BE MADE WITH 8" CEE MATERIAL UNLESS NOTED OTHERWISE.
 2. HEAD TRIM TO EXTEND 2" PAST INSIDE EDGE OF JAMB TRIM.
 3. ALL "AX" CLIPS ARE 3x5(10) 5" LONG AND ARE SHIPPED LOOSE.
 4. FIELD DRILL WEEP HOLES IN HEAD TRIM AS NEEDED FOR WATER DRAINAGE.

DESCRIPTION		
WINDOW INSTALLATION DETAILS		
DRAWN BY #	ISSUE DATE	PAGE
DAW	1/8/2003	16



- INSTALLATION PROCEDURE**
1. LEAVE 3 RIDGE CAPS OFF WHERE RIDGE VENT IS TO BE PLACED. THEN BACK LAP ONE RIDGE CAP OR OPERATOR WILL NOT WORK.
 2. FIELD CUT END CAPS FOR REQUIRED ROOF SLOPE.
 3. ATTACH END CAP SKIRTS TO BOTH ENDS OF VENT WITH POP RIVETS. NOTE THAT ENDCAP SKIRTS WILL LAP OVER RIDGECAP BY 1'-0".
 4. APPLY OUTSIDE CLOSURE TO ROOF PANELS WITH 1" MASTIC TAPE TOP AND BOTTOM ALONG EACH SIDE OF 10'-0" OPENING.
 5. APPLY 1" MASTIC TAPE TO HIGH RIB OF RIDGE CAP AT EACH END OF OPENING.
 6. SET VENT IN PLACE AND ATTACH TO ROOF PANELS AT HIGH RIB WITH #14 x 7/8" LAP TEKS.

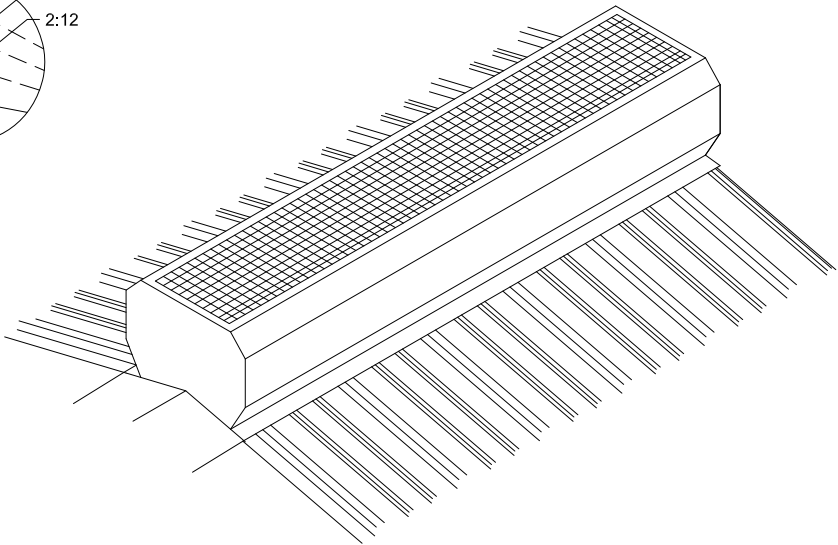
NOTE: RIDGE VENTS ARE STOCKED IN GALVALUME & WHITE ONLY.



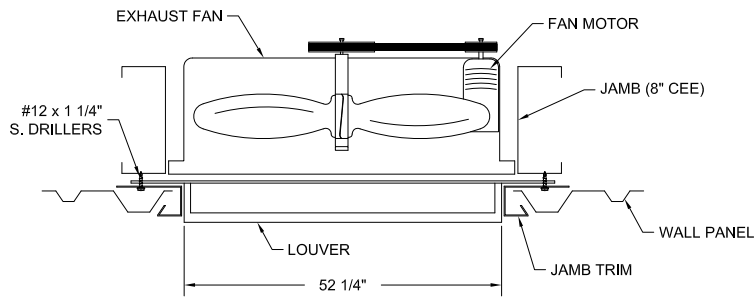
END CAP MODIFICATION DETAIL FOR ROOF SLOPE GREATER THAN 1:12

NOTE: END CAP IS FACTORY CUT FOR 1:12 PITCH. THREE DOTS INDICATE 2:12, 3:12, & 4:12 PITCHES. FIELD CUT FOR YOUR DESIRED PITCH.

WARNING
THE ROOF SHOULD BE SWEEP CLEAN OF ANY DRILL SHAVINGS AT THE END OF EACH DAY TO PREVENT RUST.

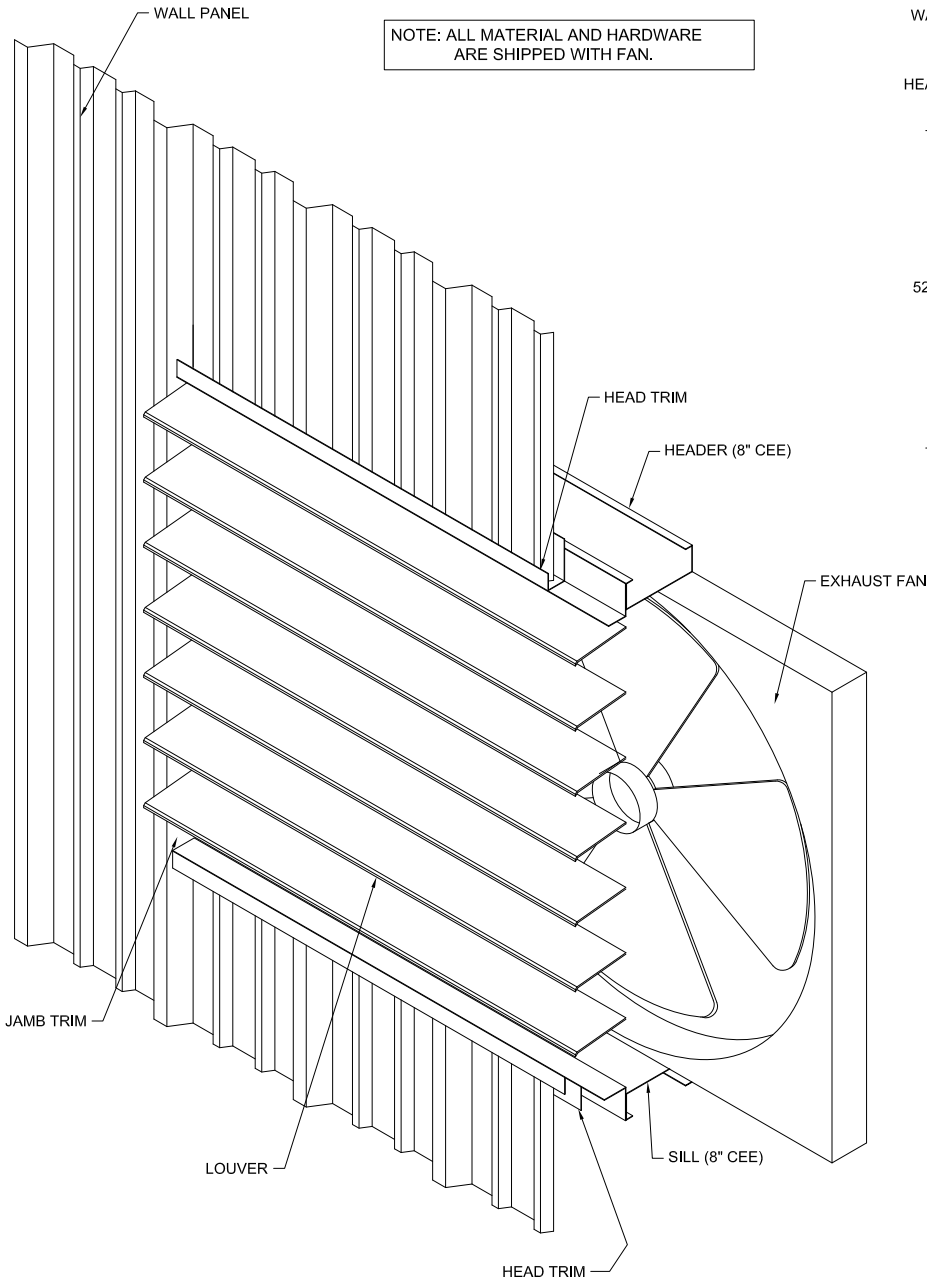


DESCRIPTION		
RIGID VENT INSTALLATION DETAILS		
DRAWN BY #	ISSUE DATE	PAGE
DAW	1/8/2003	17

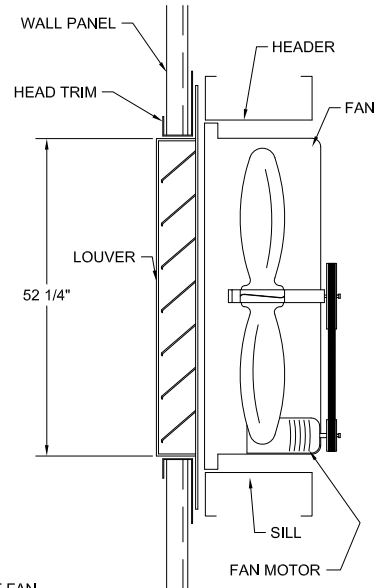


NOTE: SEE ERECTION DRAWINGS FOR FRAMED OPENING LOCATION.

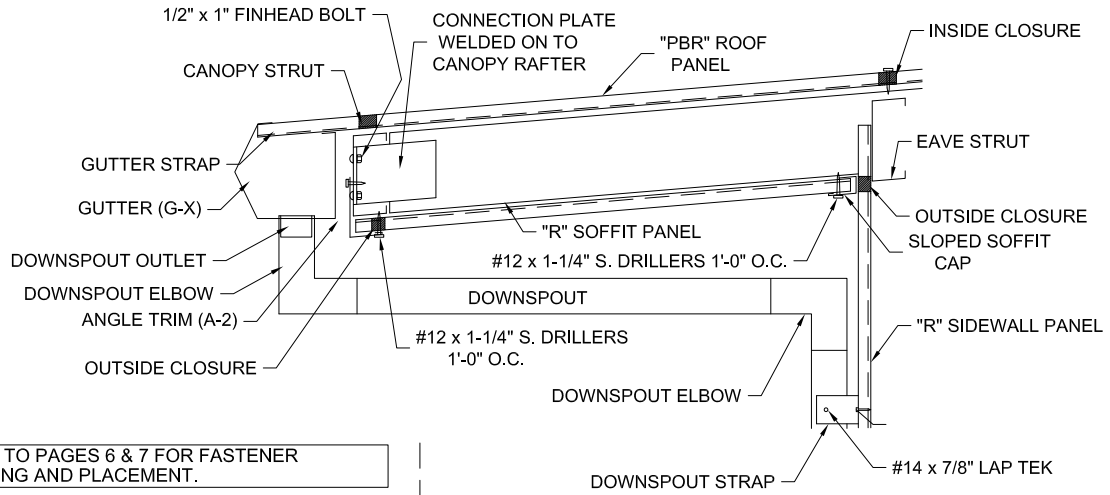
NOTE: FIELD DRILL WEEP HOLES IN HEAD TRIM FOR DRAINAGE.



NOTE: ALL MATERIAL AND HARDWARE ARE SHIPPED WITH FAN.

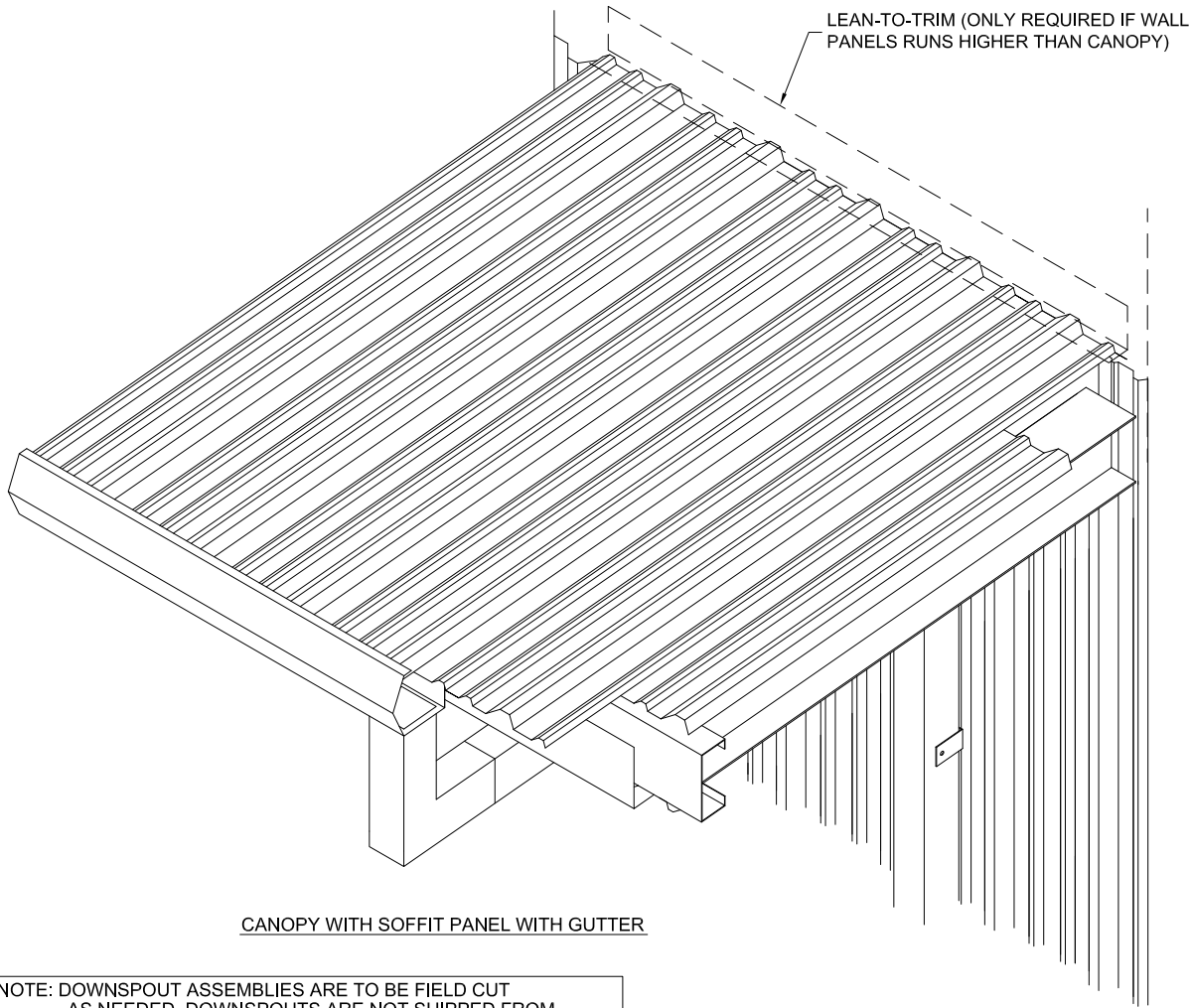


DESCRIPTION		
LOUVER & FAN INSTALLATION DETAILS		
DRAWN BY #	ISSUE DATE	PAGE
DAW	1/8/2003	18



NOTE: REFER TO PAGES 6 & 7 FOR FASTENER SPACING AND PLACEMENT.

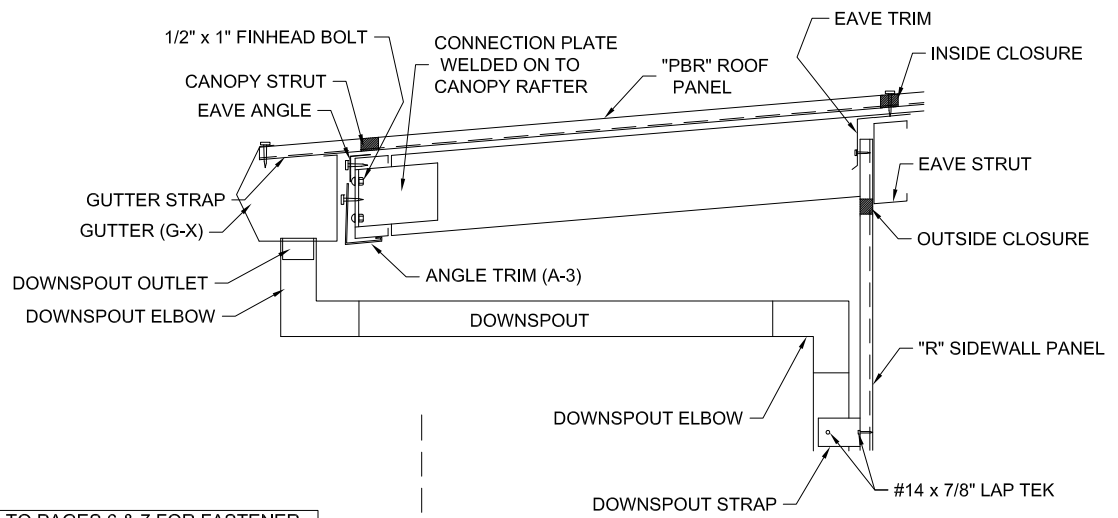
NOTE: FIELD NOTCH WALL PANEL @ CANOPY RAFTER AS NEEDED.



CANOPY WITH SOFFIT PANEL WITH GUTTER

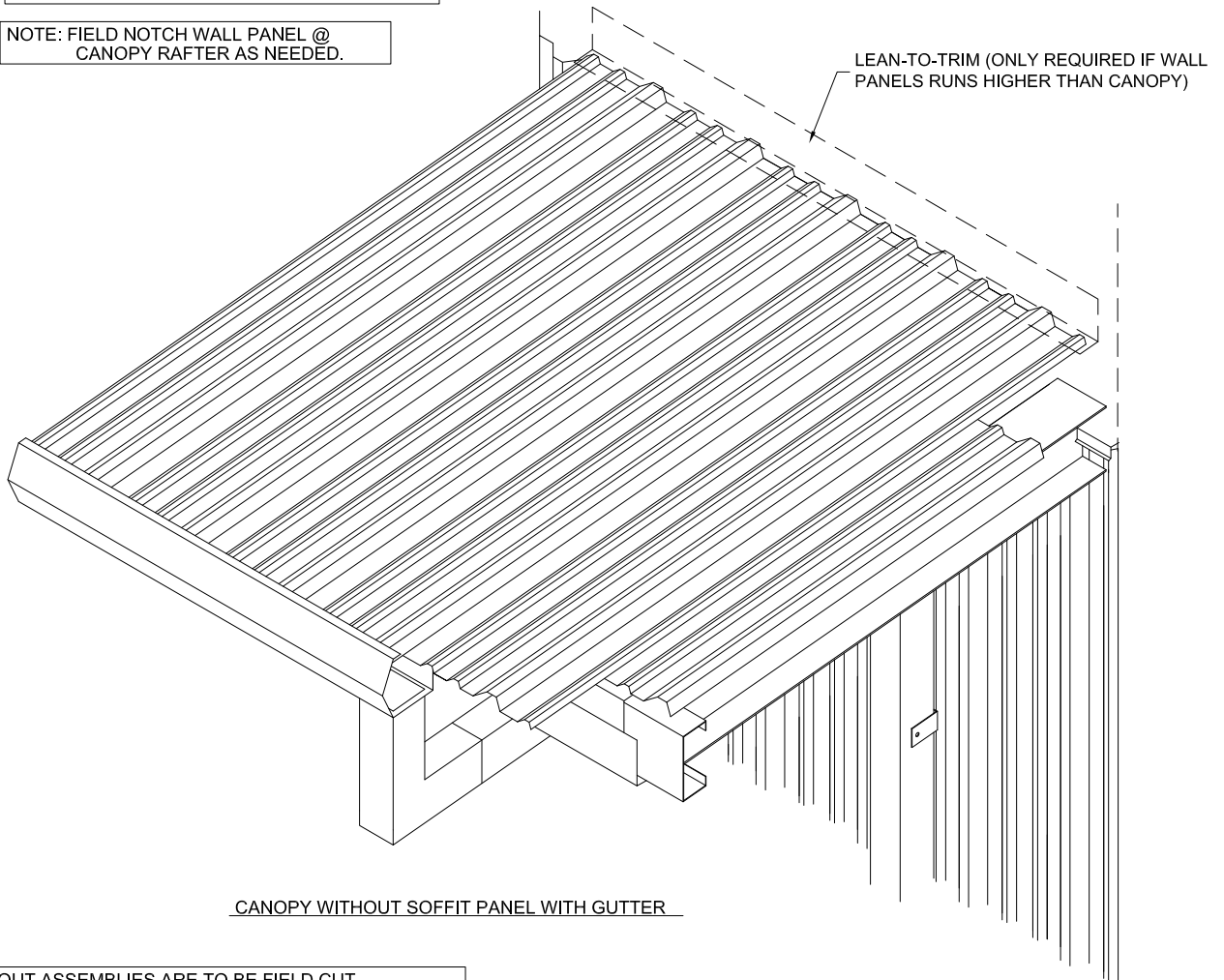
NOTE: DOWNSPOUT ASSEMBLIES ARE TO BE FIELD CUT AS NEEDED. DOWNSPOUTS ARE NOT SHIPPED FROM THE MANUFACTURERS ASSEMBLED.

DESCRIPTION		
CANOPY OVER HANG W/SOFFIT & GUTTER DETAILS		
DRAWN BY #	ISSUE DATE	PAGE
DAW	1/8/2003	19



NOTE: REFER TO PAGES 6 & 7 FOR FASTENER SPACING AND PLACEMENT.

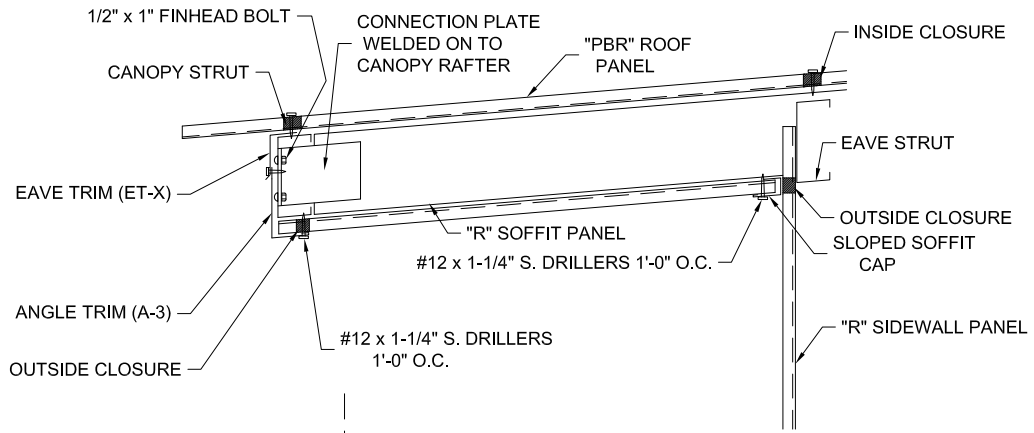
NOTE: FIELD NOTCH WALL PANEL @ CANOPY RAFTER AS NEEDED.



CANOPY WITHOUT SOFFIT PANEL WITH GUTTER

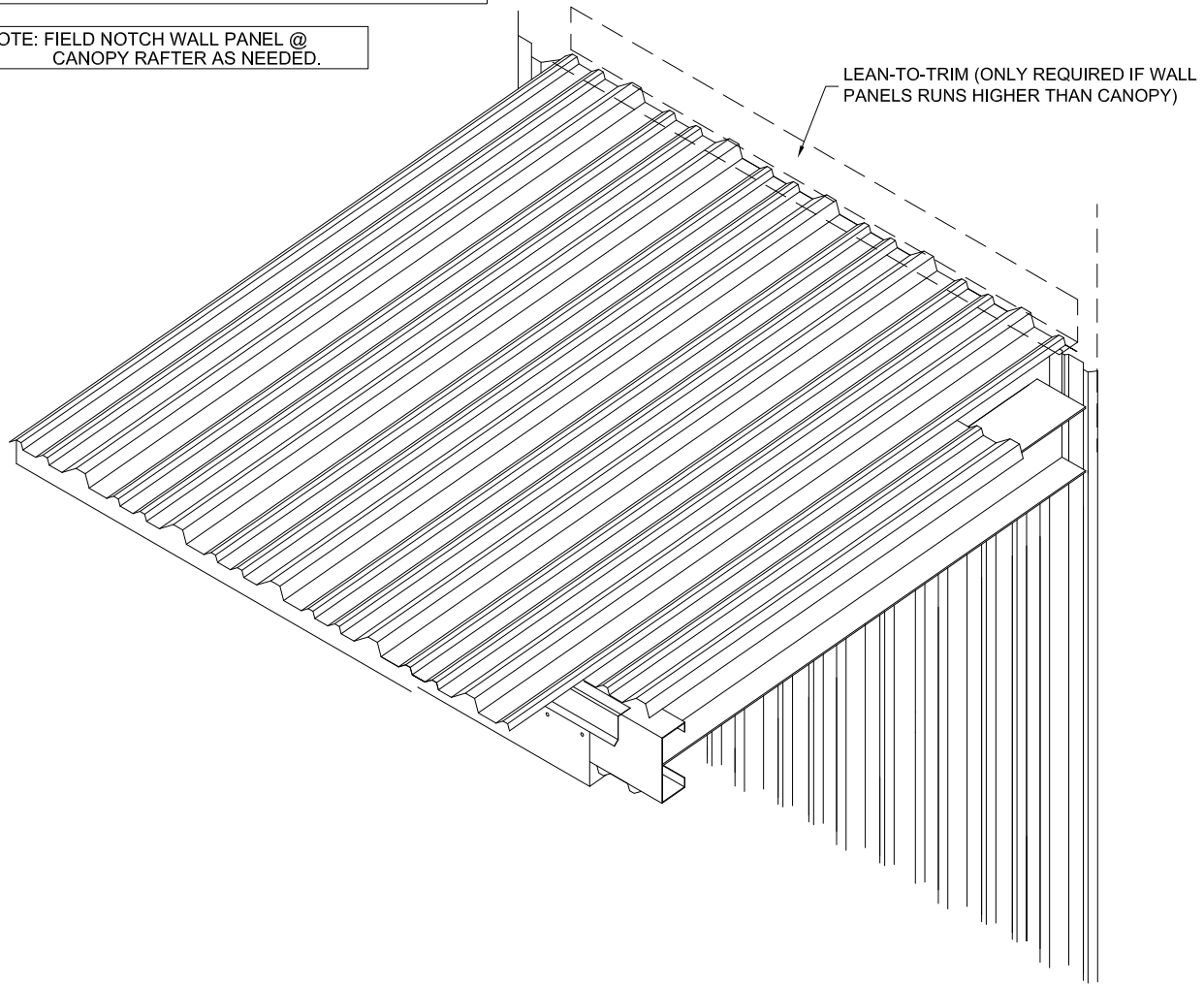
NOTE: DOWNSPOUT ASSEMBLIES ARE TO BE FIELD CUT AS NEEDED. DOWNSPOUTS ARE NOT SHIPPED FROM THE MANUFACTURERS ASSEMBLED.

DESCRIPTION		
CANOPY OVER HANG W/GUTTER DETAILS		
DRAWN BY #	ISSUE DATE	PAGE
DAW	1/8/2003	20



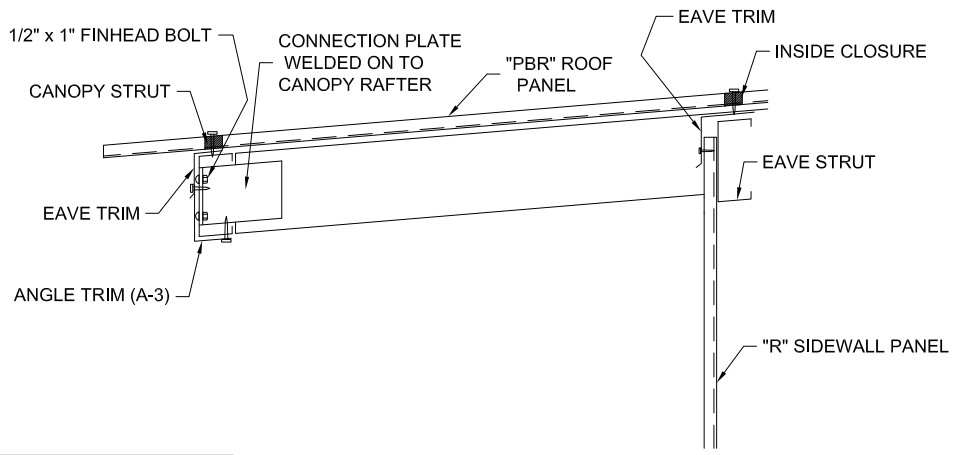
NOTE: REFER TO PAGES 6 & 7 FOR FASTENER SPACING AND PLACEMENT.

NOTE: FIELD NOTCH WALL PANEL @ CANOPY RAFTER AS NEEDED.



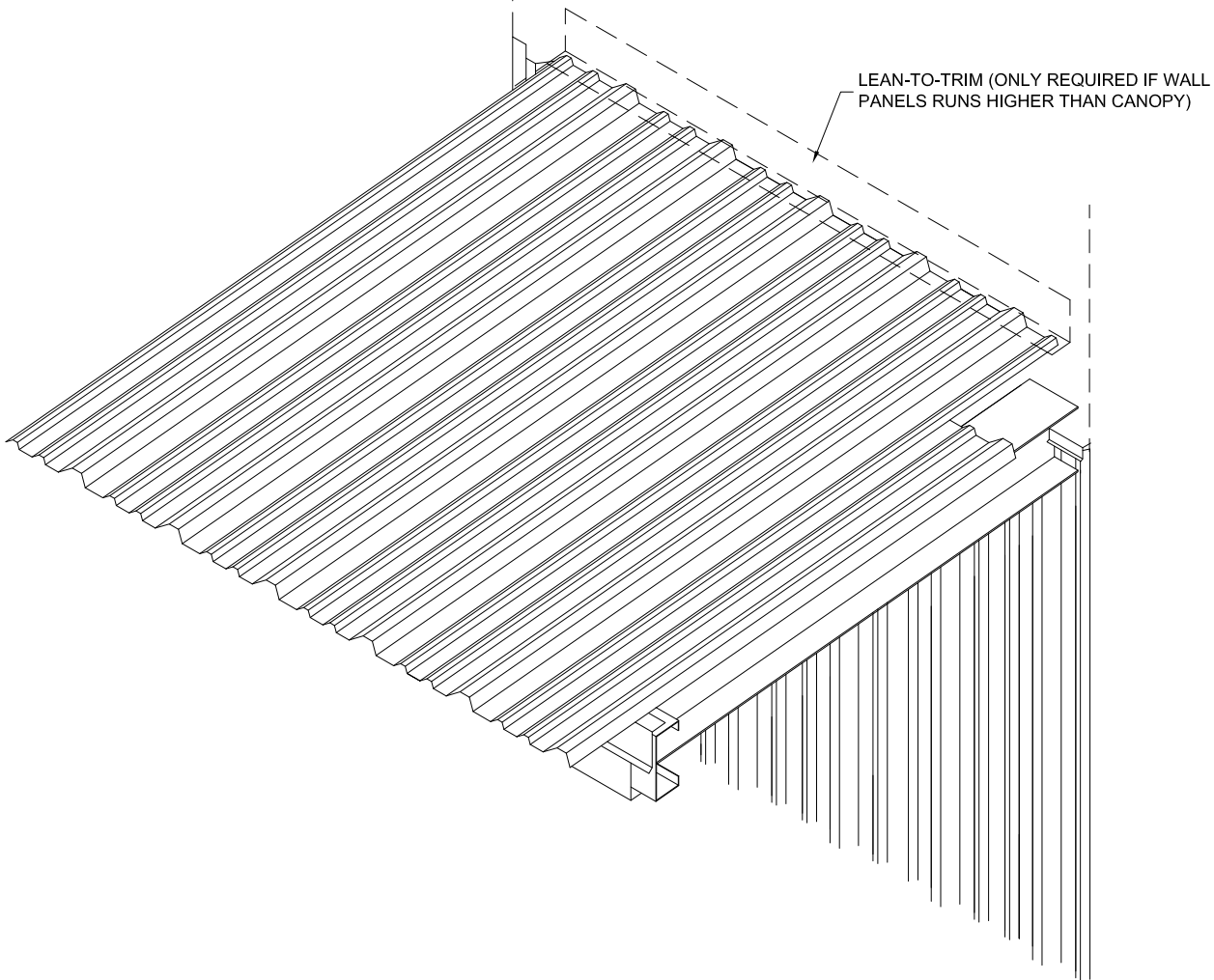
CANOPY WITH SOFFIT PANEL WITHOUT GUTTER

DESCRIPTION		
CANOPY OVER HANG W/ SOFFIT & WITHOUT GUTTER DETAILS		
DRAWN BY #	ISSUE DATE	PAGE
DAW	1/8/2003	21



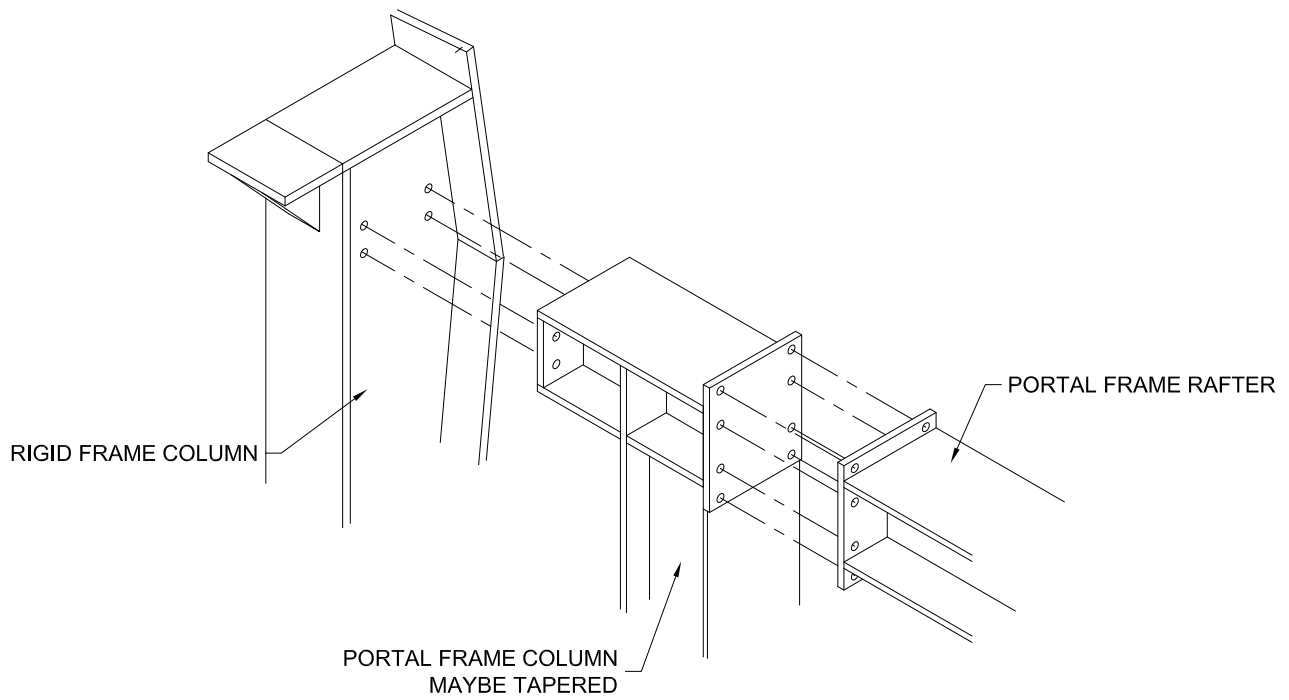
NOTE: REFER TO PAGES 6 & 7 FOR FASTENER SPACING AND PLACEMENT.

NOTE: FIELD NOTCH WALL PANEL @ CANOPY RAFTER AS NEEDED.

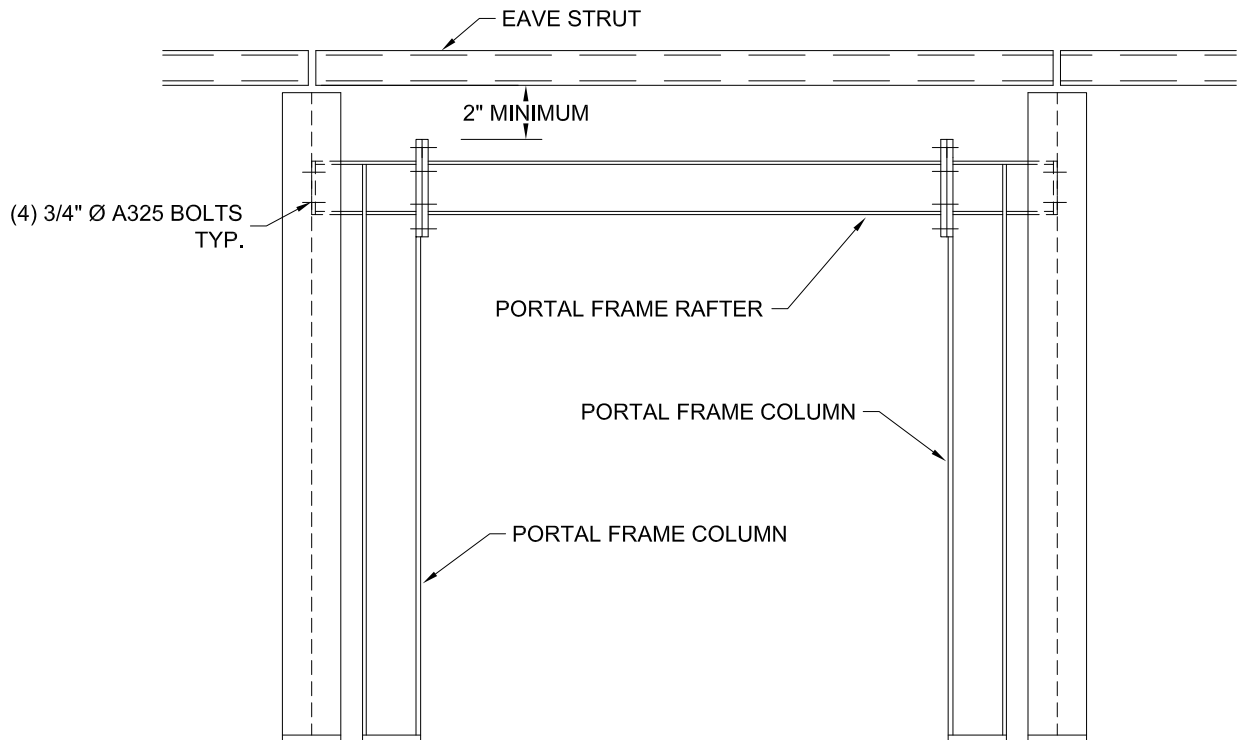


CANOPY WITHOUT SOFFIT PANEL WITH EAVE TRIM

DESCRIPTION		
CANOPY OVER HANG DETAILS		
DRAWN BY #	ISSUE DATE	PAGE
DAW	1/8/2003	22

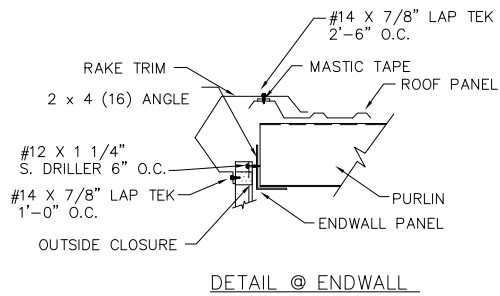


NOTE: USE A325 BOLTS FOR ALL CONNECTIONS

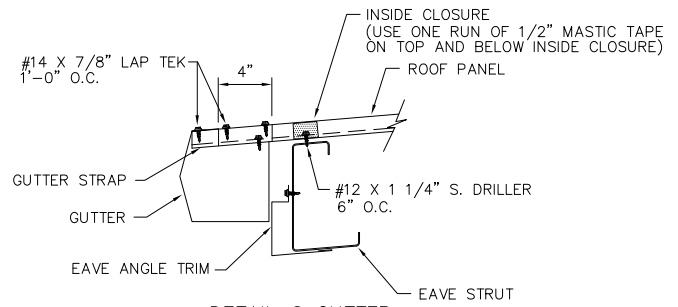


NOTE : COLUMN PROFILES MAY VARY

DESCRIPTION		
PORTAL FRAME DETAILS		
DRAWN BY #	ISSUE DATE	PAGE
DAW	1/8/2003	23

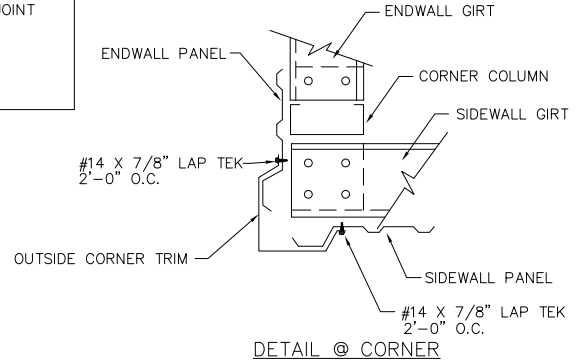


DETAIL @ ENDWALL

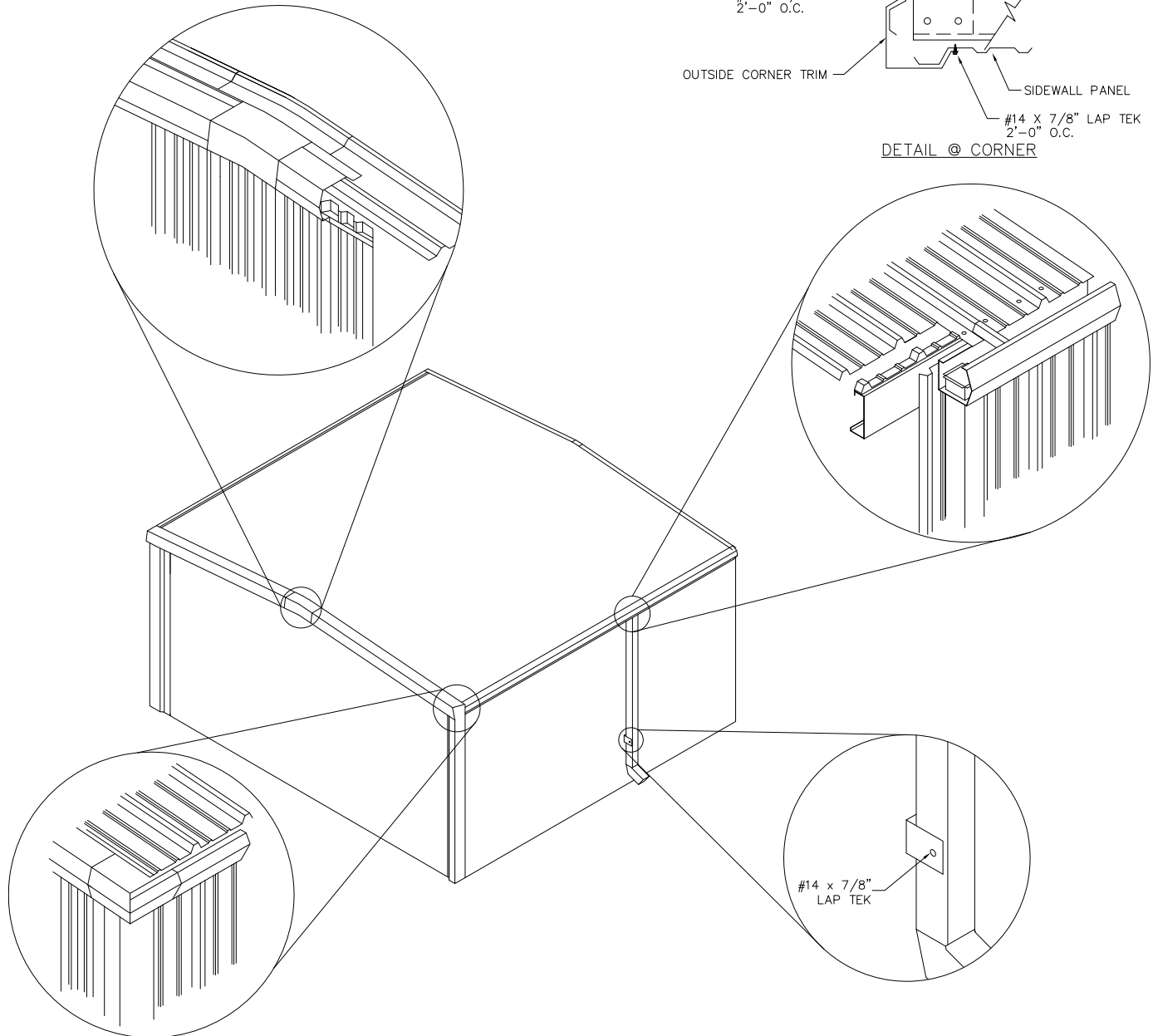


DETAIL @ GUTTER

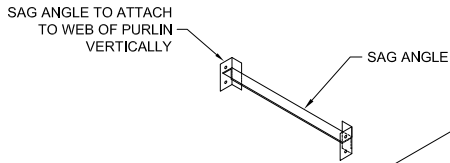
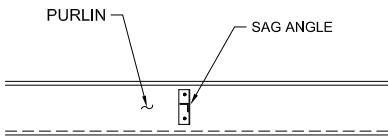
GUTTER JOINTS - (10) POP RIVETS PER JOINT AND (1) TUBE OF CAULK PER (3) JOINTS.
 DOWNSPOUTS - (10) POP RIVETS PER DOWNSPOUT JOINT AND (1) TUBE OF CAULK PER (3) DOWNSPOUTS JOINT
 CORNER BOXES - (10) POP RIVETS PER (1) CORNER BOX.
 PEAK BOXES - (10) POP RIVETS PER (1) PEAK BOX.
 GUTTER ENDCAPS - (1) TUBE OF CAULK PER (2) GUTTER ENDCAP



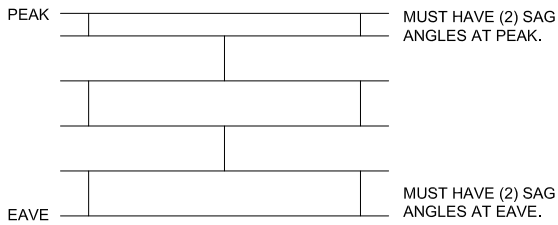
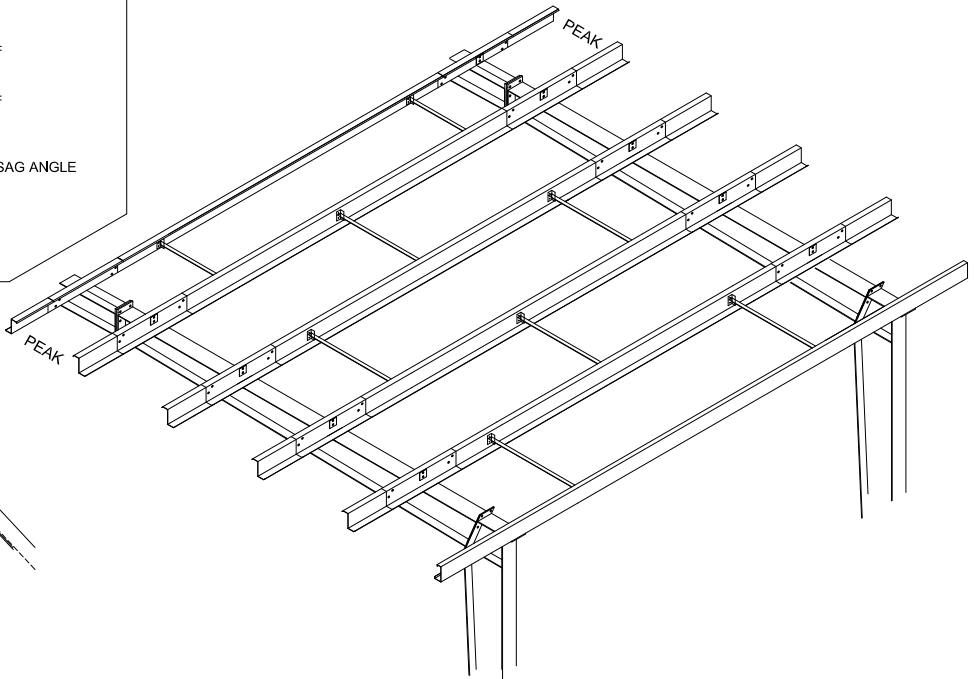
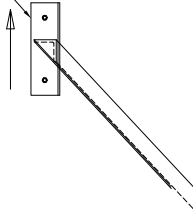
DETAIL @ CORNER



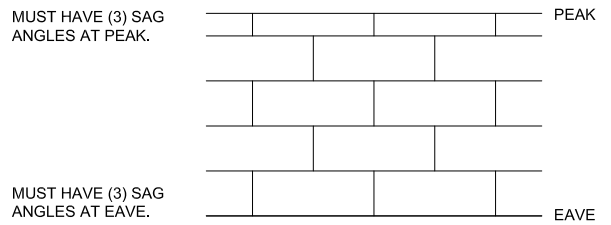
DESCRIPTION		
STANDARD TRIM INSTALLATION DETAILS		
DRAWN BY #	ISSUE DATE	PAGE
DAW	1/8/2003	24



THIS EDGE OF SAG ANGLE MUST BE VERTICAL.

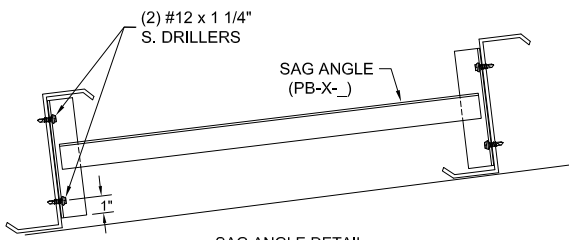


BAYS WITH (3) POINT SAG ANGLE

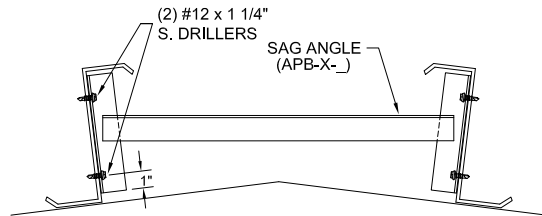


BAYS WITH (5) POINT SAG ANGLE

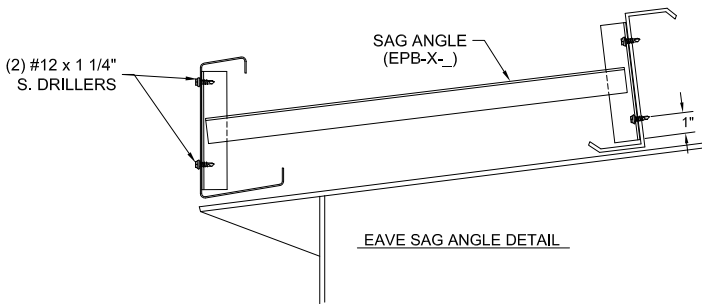
1. SAG ANGLES WILL BE SPECIFIED ON THE ERECTION DRAWINGS WHEN REQUIRED.
2. IF SAG ANGLES ARE REQUIRED, USE THE EXAMPLES FROM ABOVE UNLESS SPECIFIED OTHERWISE ON THE ERECTION DRAWINGS.



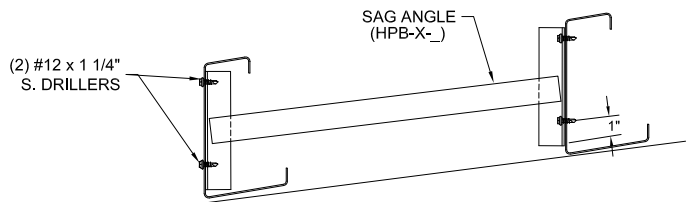
SAG ANGLE DETAIL



PEAK SAG ANGLE DETAIL

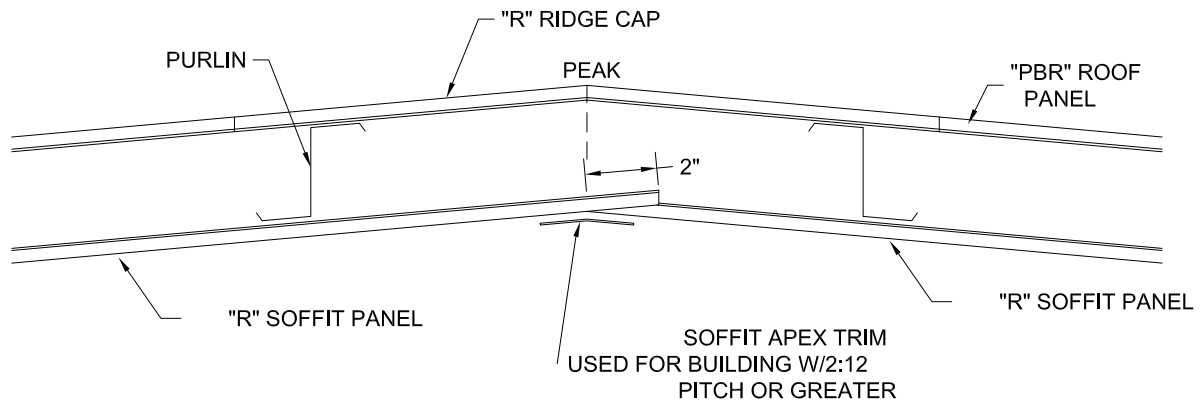
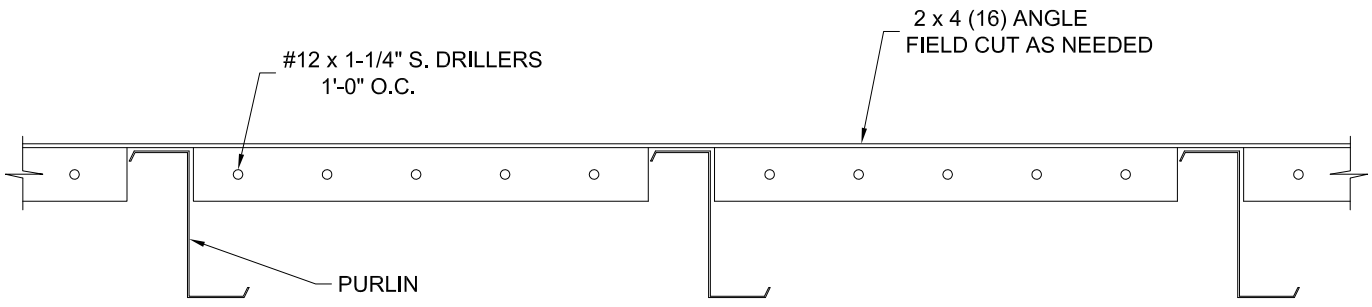
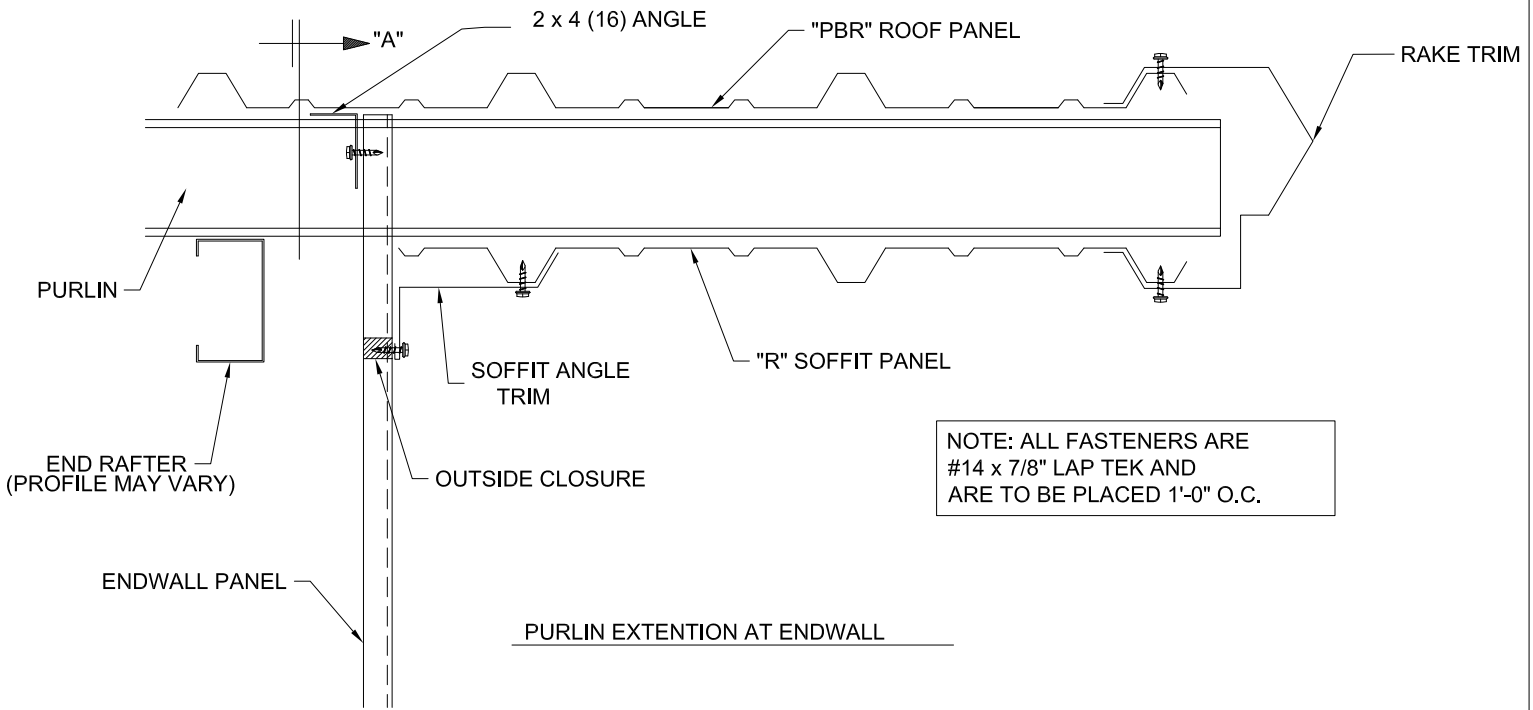


EAVE SAG ANGLE DETAIL



CANOPY SAG ANGLE DETAIL

DESCRIPTION		
SAG ANGLE INSTALLATION DETAILS		
DRAWN BY #	ISSUE DATE	PAGE
DAW	1/8/2003	25

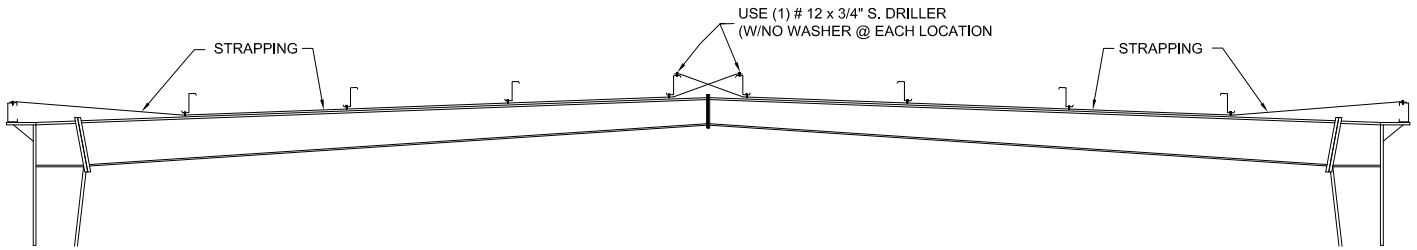


SOFFIT PANEL LAP AT ENDWALL PEAK

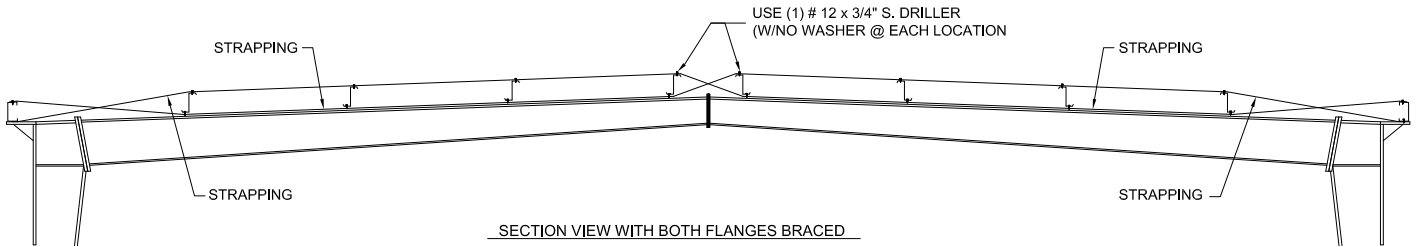
NOTE: SOFFIT PANELS TO LAP 2" AT PEAK

NOTE: REFER TO PAGES 7 AND 8 FOR FASTENER SPACING AND PLACEMENT

DESCRIPTION		
ENDWALL ROOF OVERHANG		
ENDWALL RAFTER		
DRAWN BY #	ISSUE DATE	PAGE
DAW	1/8/2003	26

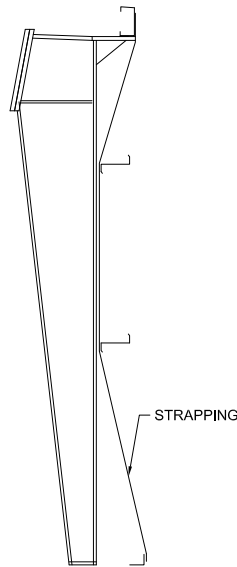


SECTION VIEW WITH BOTTOM FLANGE BRACED



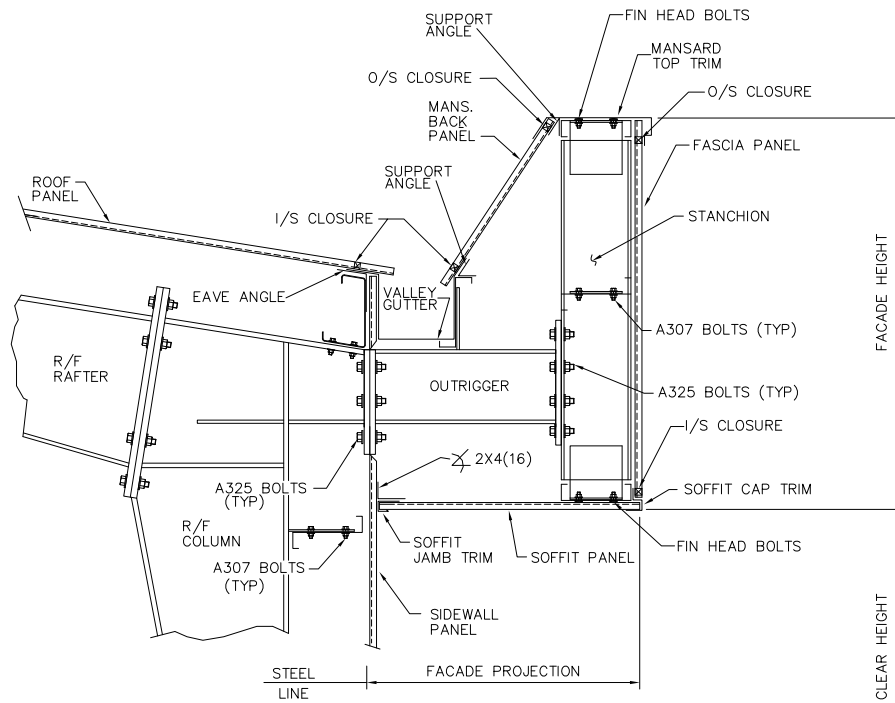
SECTION VIEW WITH BOTH FLANGES BRACED

NOTE: REFER TO ERECTION DRAWINGS FOR STRAPPING PLACEMENT
STRAPPING WILL BE SPECIFIED ON ERECTION DRAWINGS IF
REQUIRED.

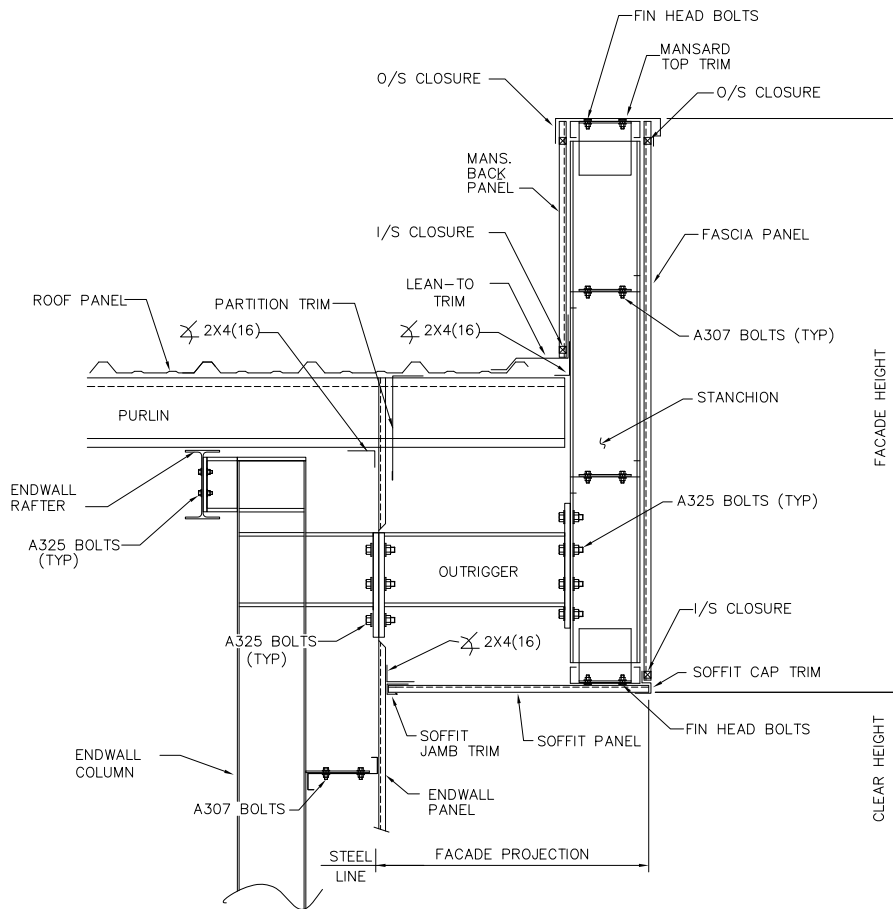


SIDEWALL VIEW FOR STRAPPING

DESCRIPTION		
STRAPPING INSTALLATION DETAILS		
DRAWN BY #	ISSUE DATE	PAGE
DAW	1/8/2002	27



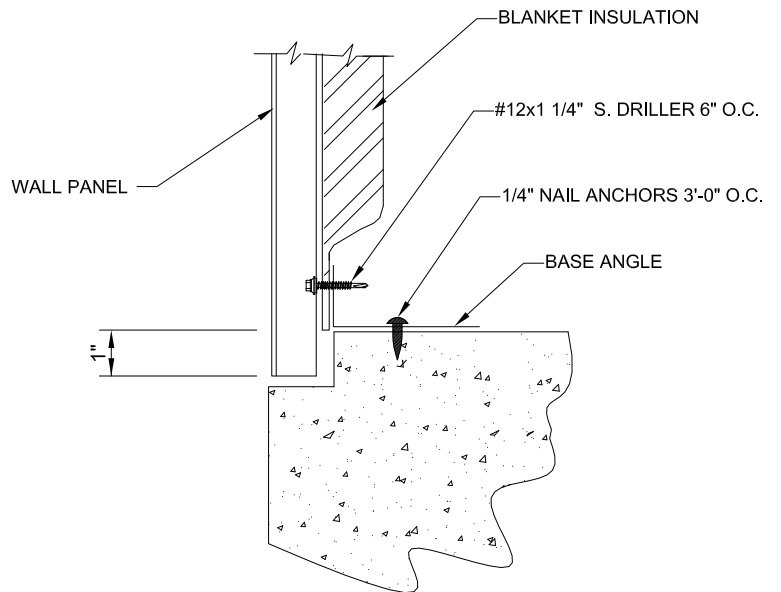
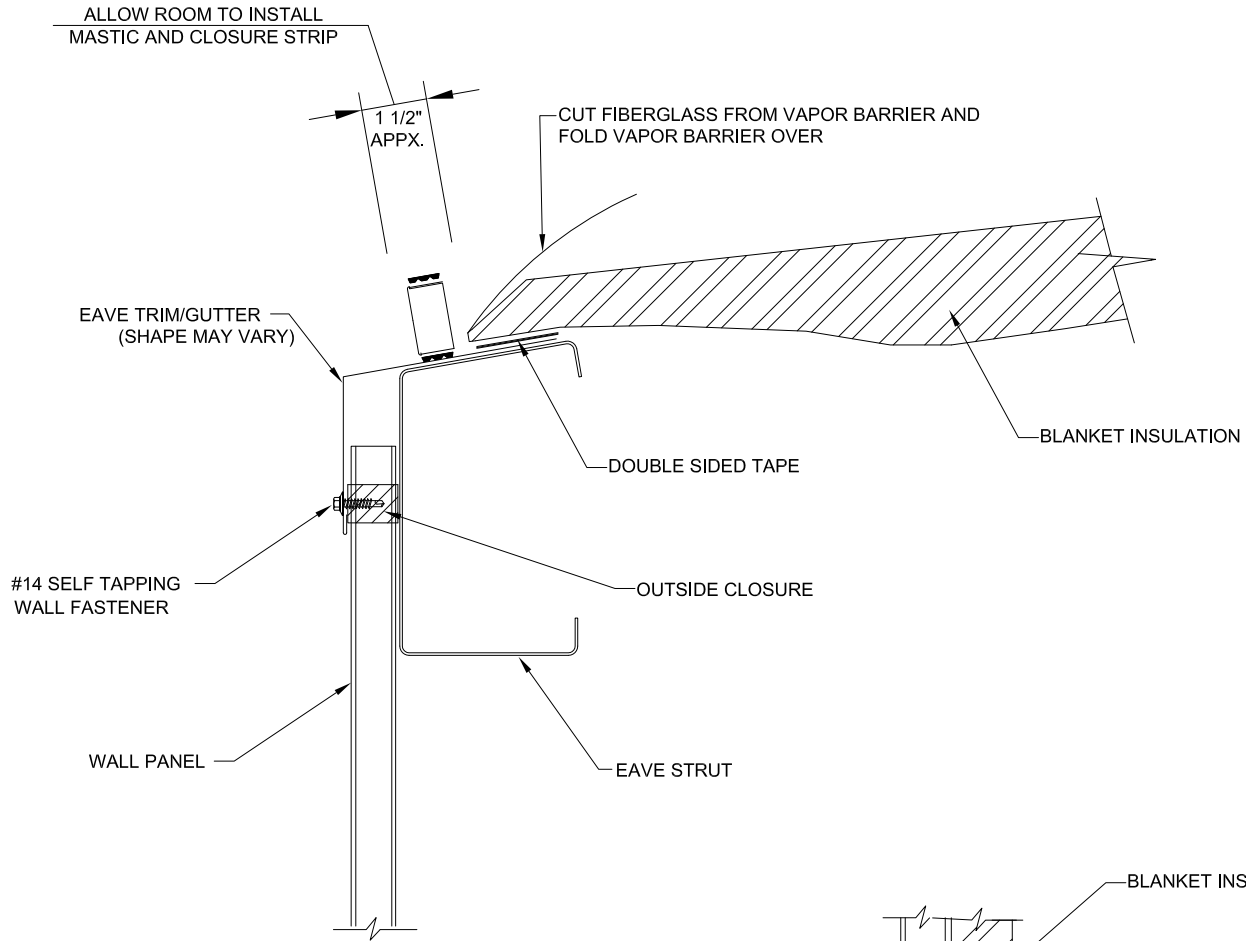
TYPICAL FACADE @ SIDEWALL



TYPICAL FACADE @ ENDWALL

DESCRIPTION		
FACADE FRAMING & INSTALLATION DETILS		
DRAWN BY #	ISSUE DATE	PAGE
DAW	1/8/2003	28

STD. ROOF DETAIL INSULATION

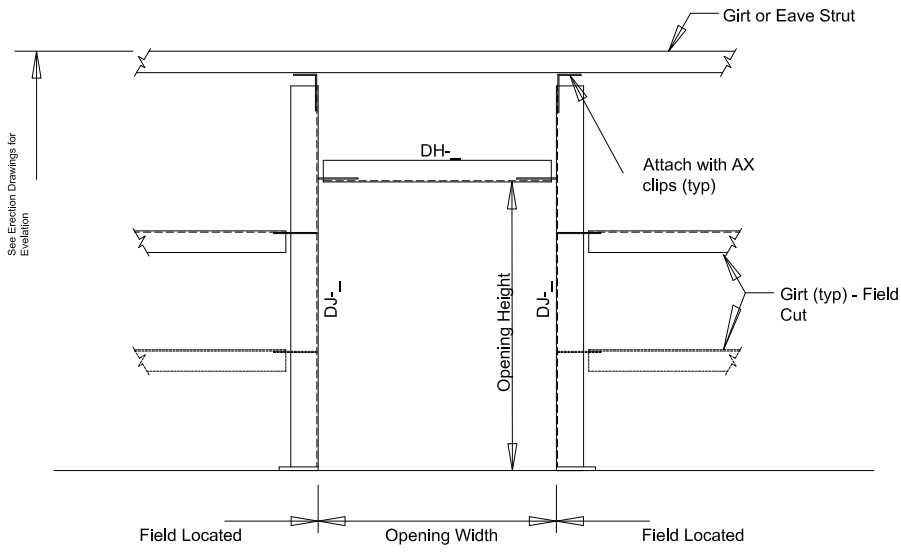


NOTE:

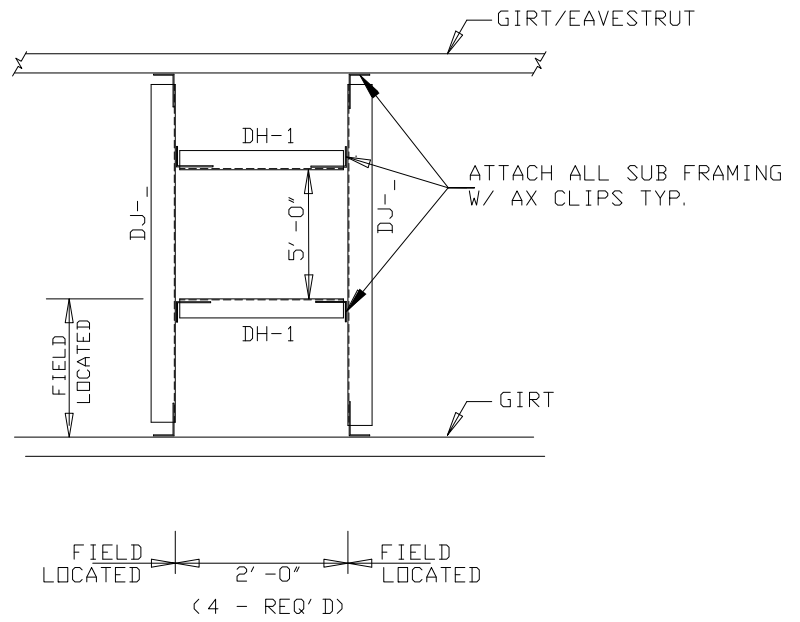
DO NOT ALLOW INSULATION TO WICK MOISTURE. NEVER CUT THE INSULATION OFF EVEN WITH THE EDGE OF THE PANELS. TRIM EXCESS FIBERGLASS AND VAPOR BARRIER BACK AT LEAST 1" ABOVE THE BOTTOM OF ALL WALL PANELS. FOLD VAPOR BARRIER BACK OVER FIBERGLASS 3" TO 6" AT EAVE ON ROOF STOP INSULATION SHORT OF OUTSIDE EDGE OF EAVE STRUT. INSULATION WHICH WICKS MOISTURE WILL DAMAGE PANELS AND VOID ANY PANEL WARRANTY.

STANDARD BASE DETAIL

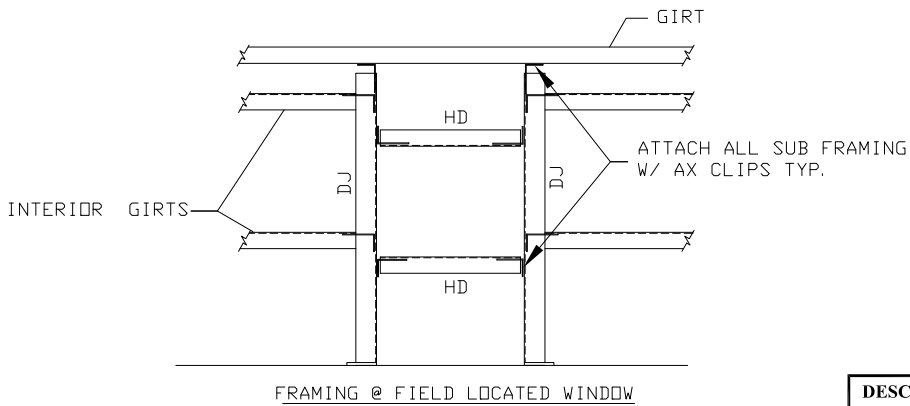
DESCRIPTION		
INSULATION INSTALLATION DETAILS		
DRAWN BY #	ISSUE DATE	PAGE
DAW	1/8/2003	29



FRAMING @ FIELD LOCATED DOOR



FRAMING @ FIELD LOCATED FAN BETWEEN GIRTS



FRAMING @ FIELD LOCATED WINDOW

DESCRIPTION		
EXAMPLES OF TYPICAL FIELD LOCATED FRAMING ASSEMBLY		
DRAWN BY #	ISSUE DATE	PAGE
XXX	FOR REVIEW ONLY	30